

Diagnostic Interface with Akroview

STYLE 6046

The 6046 Diagnostic Interface Kit provides a method of connecting a PC to the Akron Brass CAN network. This product is part of the 6000 series for use with the Universal II and other Akron Brass Onboard monitor controls.

Features

The style 6046 Diagnostic Interface Kit with accompanying Akroview software allows the user to perform various diagnostic functions on all Akron Brass CAN products.

- USB Interface
- Associated Cables Included
- Use to download Updates
- View I/O status of Akron Brass devices on the network
- View Diagnostic codes of Akron Brass devices on the network
- Capture Akron Brass CAN Communication
- Windows XP, Windows 7



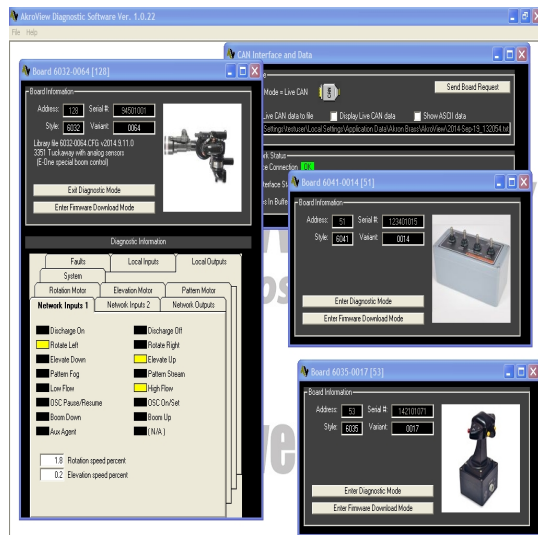
Specifications

Style	6046
Country of Manufacture	
Type	Electrical
Brand	FireFox

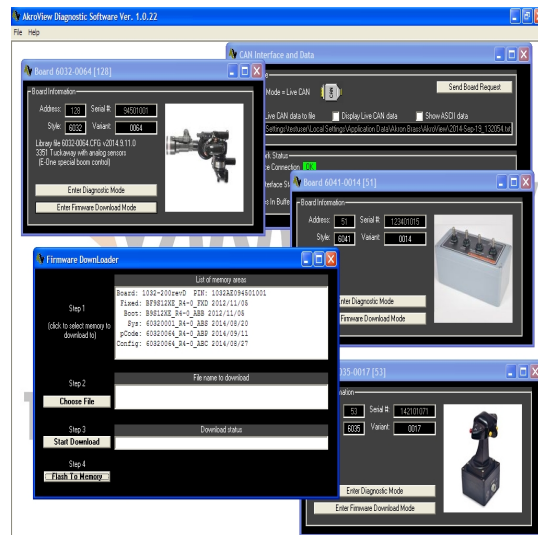
Diagnostic Interface with Akroview

STYLE 6046

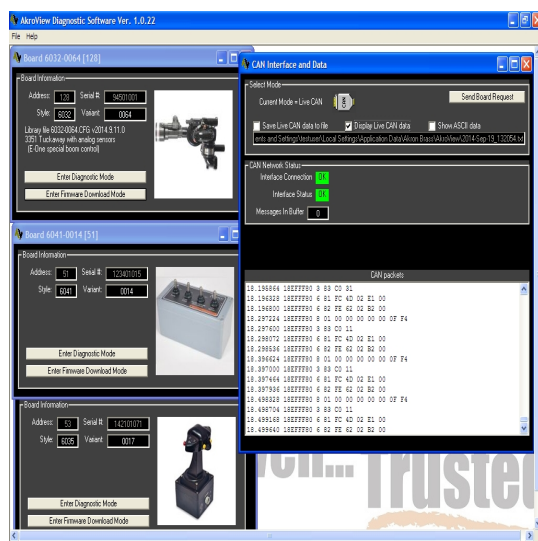
Diagnose Devices



Update Firmware



Capture Data



USB to CAN Adapter



Diagnostic Interface with Akroview

STYLE 6046

- J1939 CAN Compliant
- 12 or 24 volt operation