

Shield, 2030 Series Light Zinc

STYLE 2034-0000-00

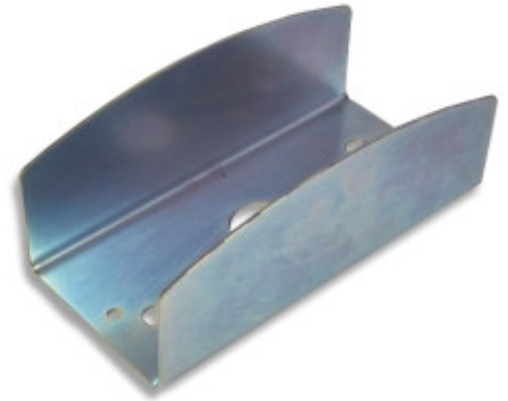


- Black E-coated base plate, no rust or corrosion issues
- Single or dual filament
- Socket back or flat back

-Service Part for 2030 Series

Features

2030 Series, 2.5"x6" Stop, Turn & Tail Lamps This highly-stylized lamp features pillow optics for superior appearance and maximum light output. The 2030-9110 series is ideal for utility applications.



Specifications

Style	2034-0000-00
Country of Manufacture	
Type	Service Parts
Carton Quantity	50