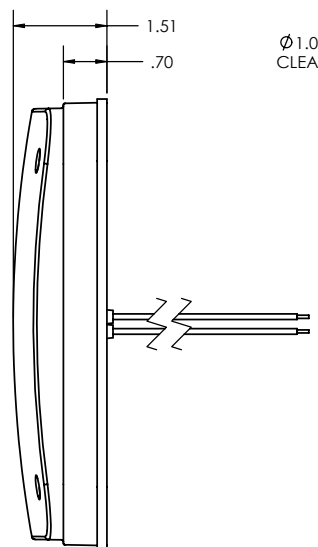
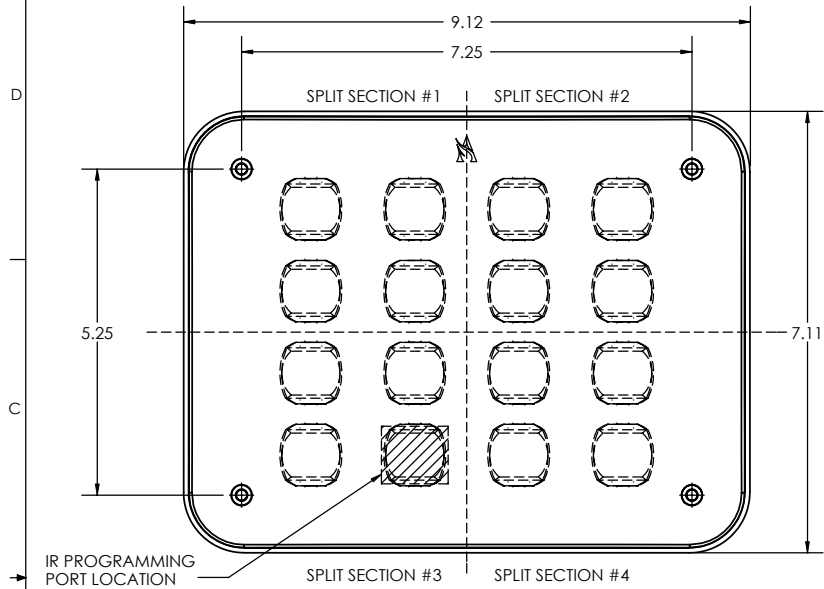
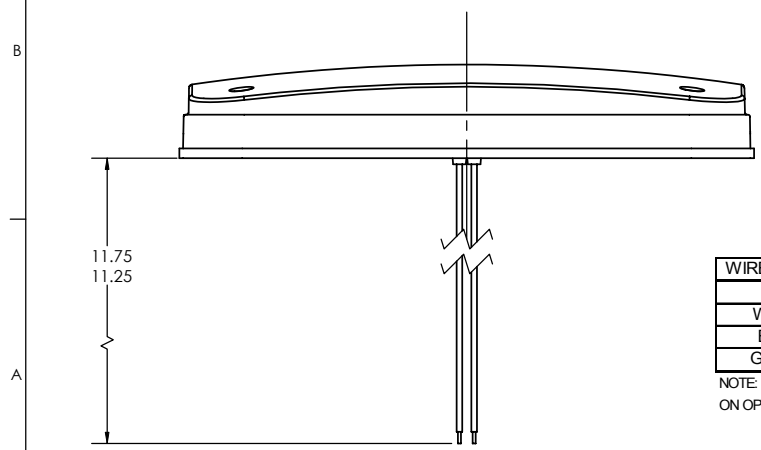
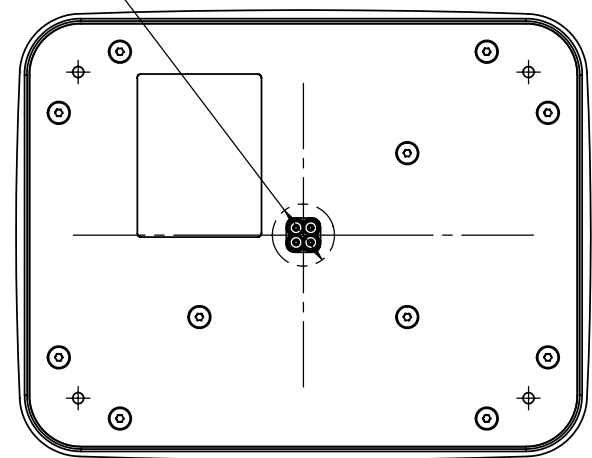


THIS DRAWING AND ALL INFORMATION CONTAINED HEREIN IS THE PROPERTY OF WELDON TECHNOLOGIES, INC. AND MAY NOT BE COPIED, REPRODUCED, OR DIVULGED TO UNAUTHORIZED PERSONS WITHOUT THE EXPRESS WRITTEN CONSENT OF WELDON TECHNOLOGIES, INC. AS IT IS BEING PROVIDED SOLELY FOR THE CONVENIENCE OF THE USER AND SHALL BE RETURNED TO WELDON TECHNOLOGIES, INC UPON REQUEST.

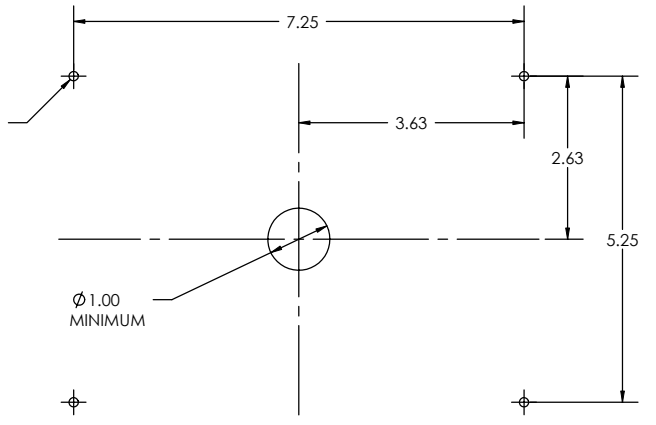
REVISIONS				
REV.	ECN	DESCRIPTION	DATE	BY / APVD
A	R0772	RELEASE FOR PRODUCTION	--	TB



Ø 1.00 MINIMUM CLEARANCE HOLE



HOLE FOR #6 SHEET METAL SCREW - 4 PLACES OR 0.25 HOLE WHEN USING SUPPLIED SCREW GROMMETS



RECOMMENDED PANEL CUT-OUT

WIRE COLOR	FUNCTION	POLARITY
RED	POWER	(+)
WHITE	GROUND	(-)
BLUE	SYNC	NONE
GREEN	SECONDARY	(+) OR (-)

NOTE: SECONDARY WIRE POLARITY IS DEPENDENT ON OPTION SELECTED IN LAMP PROGRAM

FOR LAMP CONFIGURATION DETAIL, REFERENCE DOCUMENT #0280-2461-00.

UNLESS OTHERWISE SPECIFIED DIMENSIONS ARE IN INCHES TOLERANCES ARE:		CAD GENERATED DRAWING. DO NOT MANUALLY UPDATE		WELDON TECHNOLOGIES, INC.	
X.XXX - ±0.005	X.XX - ±0.020	APPROVALS	DATE		
X.X - ±0.050	ANGLES - ±0.5°	DRAWN: BARNETT	11/9/07	DIAMONDBACK 7" X 9" CUSTOMER DRAWING	
MATERIAL		CHECKED			
FINISH		QUAL ENG		SIZE: PART NO. CV79 REV. A	
DO NOT SCALE DRAWING		MFG ENG			
PROJ. NO. 00164		SCALE: 1:2		WELDON COMPUTER GRAPHICS SHEET 1 OF 1	