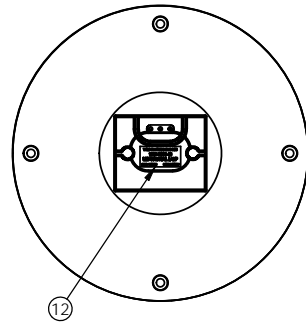
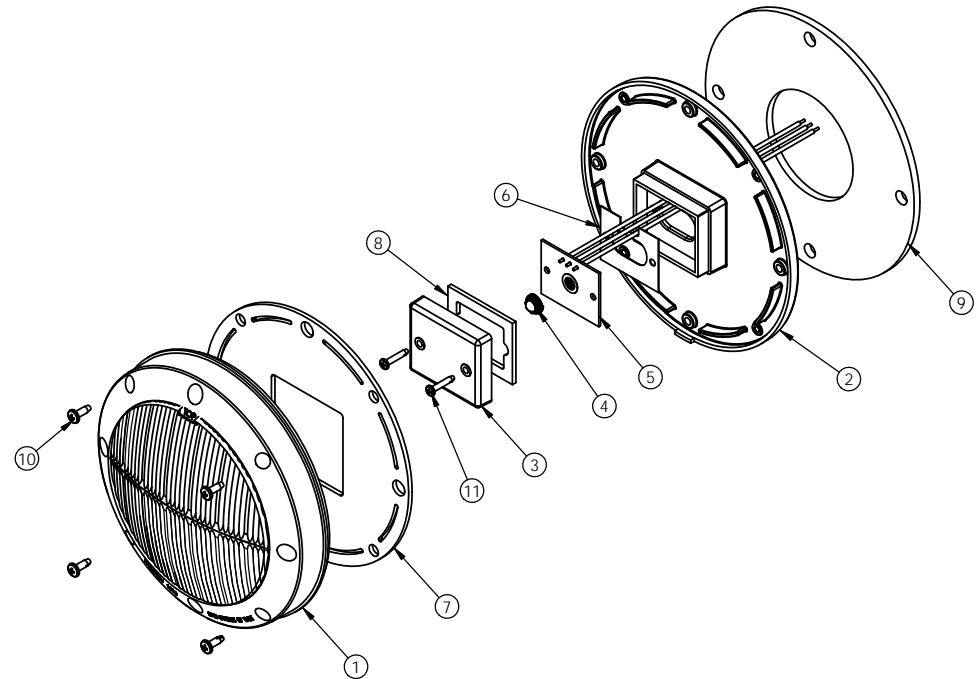


THIS DRAWING AND ALL INFORMATION CONTAINED HEREIN IS THE PROPERTY OF WELDON TECHNOLOGIES, INC. AND MAY NOT BE COPIED, REPRODUCED, OR DEVIATED TO UNAUTHORIZED PERSONS WITHOUT THE EXPRESS WRITTEN CONSENT OF WELDON TECHNOLOGIES, INC. AS IT IS BEING PROVIDED SOLELY FOR THE CONVENIENCE OF THE USER AND SHALL BE RETURNED TO WELDON TECHNOLOGIES, INC. UPON REQUEST.

REVISIONS					
REV	ECN	DESCRIPTION	DATE	BY	APVD
1	--	RELEASE FOR QUOTATION	6/14/10	TB	

ITEM	PART NUMBER	REV	DESCRIPTION	1017-9000-10	1017-9000-20	1010-9000-30
1	0C20-2684-10	3	COVER LENS, RED	1	--	--
	0C20-2684-20		COVER LENS, AMBER	--	1	--
	0C20-2740-30	1	COVER LENS, CLEAR BACK-UP	--	--	1
2	0B20-2594-00	3	BASE, ALUMINUM DIE-CAST	1	1	1
3	0C10-2662-30	2	INNER LENS, CLEAR	1	1	1
4	9900-1201-12	--	V-LED, RED - ONE-WATT	1	--	--
	9900-1201-371		V-LED, WHITE - HIGH OUTPUT	--	1	1
5	0H90-2661-10	2	PCB ASSEMBLY, STOP/TAIL	1	--	--
	0H90-2661-20		PCB ASSEMBLY, TURN SIGNAL	--	1	--
	0H90-2661-30	1	PCB ASSEMBLY, BACK-UP	--	--	1
6	0D80-2665-00	3	INSULATOR PAD	1	1	1
7	0D10-2663-00	2	GASKET, COVER LENS	1	1	1
8	0D10-2664-00	1	GASKET, INNER LENS	1	1	1
9	0D10-1977-00	A	GASKET, MOUNTING	1	1	1
10	0F20-2785-00	1	COVER LENS SCREW, #8 X 1/2"	4	4	4
11	0F20-2786-00	1	INNER LENS SCREW, #6 X 3/4"	2	2	2
12	0Q20-2787-10	1	PRODUCT LABEL, STOP/TAIL	1	--	--
	0Q20-2787-20		PRODUCT LABEL, AMBER TURN	--	1	--
	0Q20-2787-30		PRODUCT LABEL, BACK-UP	--	--	--
13	--	--	EPOXY POTTING, BLACK	as req'd	as req'd	as req'd



LABEL LOCATION DETAIL
CENTER LABEL UNDER WIRE EXIT AREA
AS SHOWN

NOTES:

- ASSEMBLE THE LAMP PER THE MATERIAL LIST.
- THE LENS SCREWS MUST BE FULLY ASSEMBLED TO THE LAMP. THE END OF THE SCREW MUST BE WITHIN 0.5mm OF THE BACK SURFACE OF THE SCREW BOSS.
- FILL THE WIRE EXIT CAVITY WITH POTTING COMPOUND. THE POTTING COMPOUND MUST NOT FLOW OVER THE CAVITY WALL. ALLOW THE POTTING TO FULLY CURE BEFORE MOVING TO ANY OTHER ASSEMBLY STEPS.
- LIGHT TEST THE LAMP TO INSURE PROPER OPERATION OF ALL FUNCTIONS. APPLY POWER AND GROUND AS INDICATED ON THE LABEL TO ACHIEVE THE PROPER FUNCTION. LAMP CURRENT MUST MEET THE FOLLOWING REQUIREMENTS AT BOTH 12.8VDC:
 1017-9000-10: STOP = 580-620mA, TAIL = 40-60mA
 1017-9000-20: TURN = 580-620mA
 1017-9000-30: BACK-UP = 580-620mA
- PACK THE LAMP ASSEMBLY INTO THE CARTON USING FLATBOARDS AND DIVIDERS. CARTON QUANTITY TO BE TWELVE ASSEMBLIES. SHIPPING CARTON SHALL BE UNPRINTED CORRUGATED CARDBOARD. A WELDON IMPORT SHIPPING LABEL (PER WTI DRAWING 0Q40-1417-00) SHALL BE APPLIED TO TWO ADJACENT CORNERS OF THE MASTER CARTON.

INSPECTION NOTES:

- THE POTTING HEIGHT AT THE WIRE EXIT SHALL FILL WITHIN 2mm OF THE TOP OF THE CAVITY WALL BUT MUST NOT OVERFLOW.
- THIS LAMP ASSEMBLY MUST COMPLY WITH FMVSS 108 AND ANY SAE STANDARD REFERENCED THEREIN WITH RESPECT TO THE FOLLOWING:
 A.) 1017-9000-10: STOP LAMPS PER SAE J586
 TAIL LAMPS PER SAE J585
 B.) 1017-9000-20: REAR TURN SIGNALS PER SAE J588
 C.) 1017-9000-30: BACK-UP LAMPS PER SAE J593
 D.) PLASTIC MATERIALS PER SAE J576
 E.) COLOR PER SAE J578
 F.) TEST METHODS PER SAE J575

UNLESS OTHERWISE SPECIFIED DIMENSIONS ARE IN INCHES TOLERANCES ARE: X.XXX - ±0.005 X.XX - ±0.020 X.X - ±0.050 ANGLES - ±0.5°	CAD GENERATED DRAWING. DO NOT MANUALLY UPDATE		WELDON TECHNOLOGIES, INC.	
	APPROVALS	DATE		
MATERIAL	DRAWN BARNETT	6/14/10	7" ROUND L.E.D. ASSEMBLY REAR LIGHTING	
FINISH	CHECKED			
DO NOT SCALE DRAWING	PROJ. NO.	00125-3	SIZE B	PART NO. 1017-9000-00
			SCALE: NONE	REV. 1