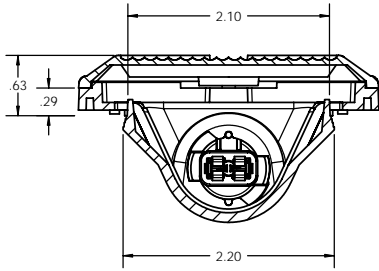
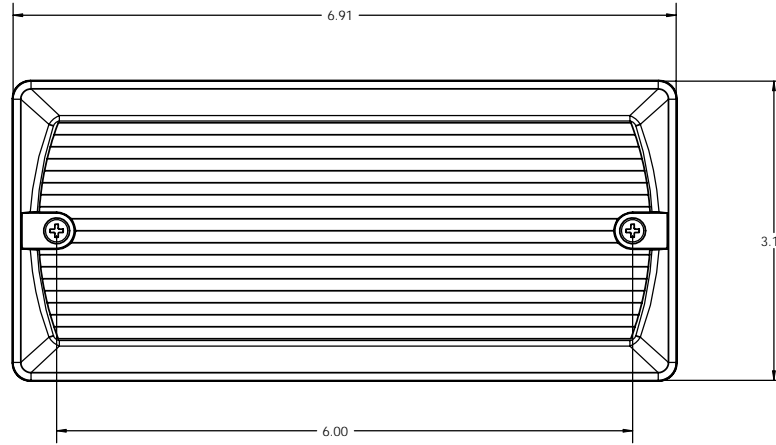
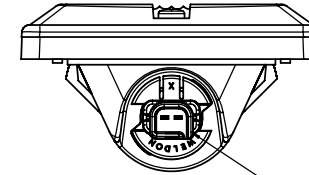
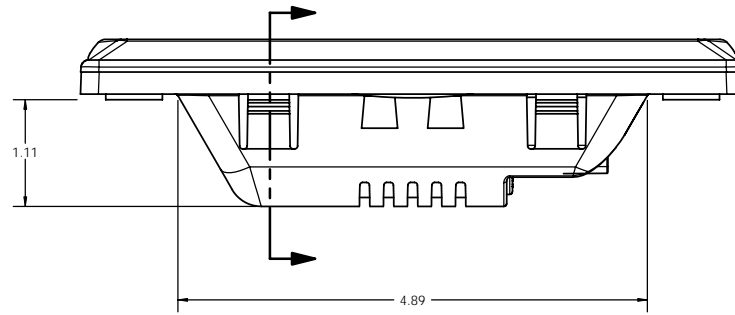


THIS DRAWING AND ALL INFORMATION CONTAINED HEREIN IS THE PROPERTY OF WELDON TECHNOLOGIES, INC. AND MAY NOT BE COPIED, REPRODUCED, OR DEVELOPED TO UNAUTHORIZED PERSONS WITHOUT THE EXPRESS WRITTEN CONSENT OF WELDON TECHNOLOGIES, INC. AS IT IS BEING PROVIDED SOLELY FOR THE CONVENIENCE OF THE USER AND SHALL BE RETURNED TO WELDON TECHNOLOGIES, INC. UPON REQUEST.

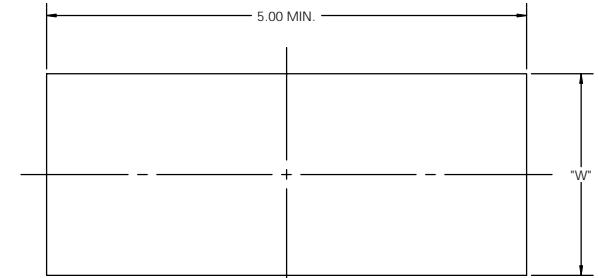
REV		DATE	DESCRIPTION	BY	DATE	APPROV
A	0078	LH	RELEASE FOR REFERENCE	LH	11/29/07	ST
B	0052	LH	REMOVED ITEMS-1&2. RENUMBERED BOM ITEMS-ITEM 5 PART NO. WAS 0D10.2266.00.	LH	8/14/08	ST



BULB NOT SHOWN FOR CLARITY

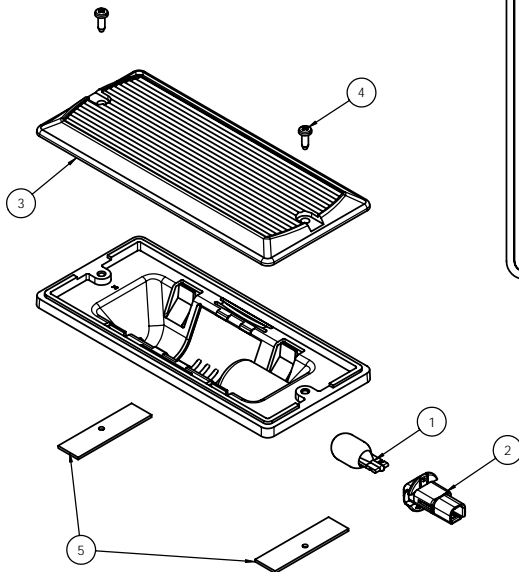


INTEGRAL CONNECTOR GEOMETRY - ACCEPTS DELPHI CONNECTOR #12047662



PANEL CUT-OUT DIMENSIONS

PANEL THICKNESS	"W"
0.030 - 0.050	2.050 - 2.130
0.050 - 0.080	2.060 - 2.145
0.080 - 0.120	2.070 - 2.165
0.120 - 0.140	2.080 - 2.185



ITEM	PART NUMBER	REV	DESCRIPTION	8020-0091-30	8020-0191-30	8020-0291-30
				QTY	QTY	QTY
1	9018-0035-00	--	BULB, #906, WEDGE BASE, T5, 6CP	1	--	--
	0E13-1469-00	--	BULB, #912, WEDGE BASE, T5, 12CP	--	1	--
	0E13-1878-00	--	BULB, #922, WEDGE BASE, T5, 12CP	--	--	1
2	0K90-1601-00	A	SOCKET, WEDGE BASE W/ DELPHI CONN	1	1	1
3	8004-0000-30	A	LENS, IMPACT MODIFIED ACRYLIC, CLEAR	1	1	1
4	0F20-1453-10	A	SCREW, #6-19 THREAD FORMING	2	2	2
5	0D10-2456-00	A	GASKET, VIBRATION DAMPING	2	2	2

UNLESS OTHERWISE SPECIFIED DIMENSIONS ARE IN INCHES TOLERANCES ARE: XXX - .0100 XX - .0020 X - .0010 ANGLES - .015°	CAD GENERATED DRAWING. DO NOT MANUALLY UPDATE.		WELDON TECHNOLOGIES, INC.	
	APPROVALS	DATE	8020 SNAP-IN DOME LAMP DELPHI CONNECTOR WITH MOUNTING PAD CUSTOMER SPEC DRAWING	
DRAWN	LH	8/29/07		
CHECKED	ST	11/22/07		
MATERIAL	MFG ENG			
FRESH	QUAL ENG			
DO NOT SCALE DRAWING	PROJECT NO.	00156	SCALE	1:1
			WELDON COMPUTER GRAPHICS	SHEET 1 OF 1