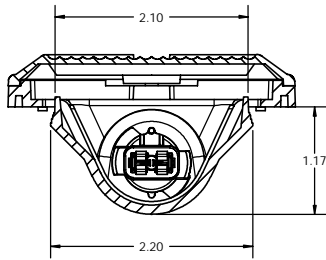
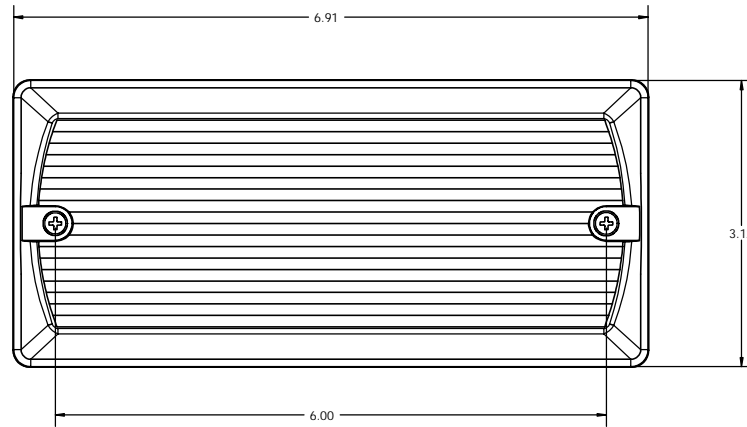
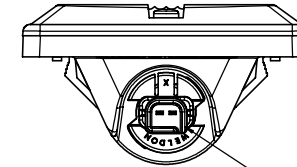
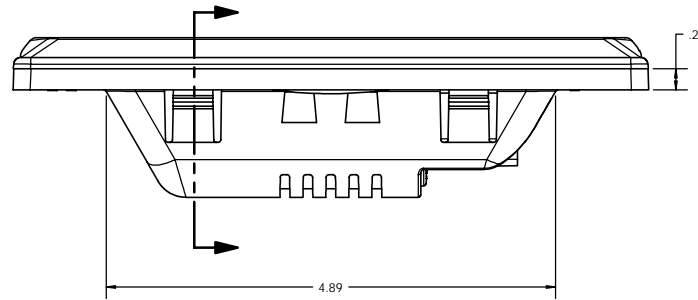


THIS DRAWING AND ALL INFORMATION CONTAINED HEREIN IS THE PROPERTY OF WELDON TECHNOLOGIES, INC. AND MAY NOT BE COPIED, REPRODUCED, OR DISSEMINATED TO UNAUTHORIZED PERSONS WITHOUT THE EXPRESS WRITTEN CONSENT OF WELDON TECHNOLOGIES, INC. AS IT IS BEING PROVIDED SOLELY FOR THE CONVENIENCE OF THE USER AND SHALL BE RETURNED TO WELDON TECHNOLOGIES, INC. UPON REQUEST.

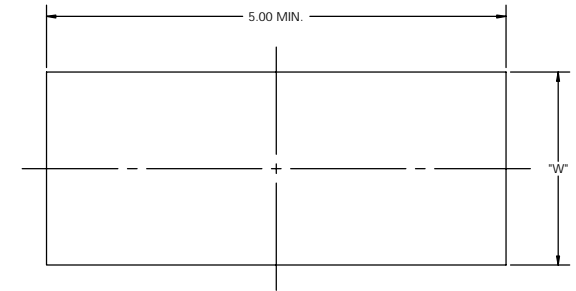
REV	ENCL #	DESCRIPTION	BY	DATE	APPROV
A	8000	RELEASE FOR REFERENCE	TR	12/25/03	ST



BULB NOT SHOWN FOR CLARITY

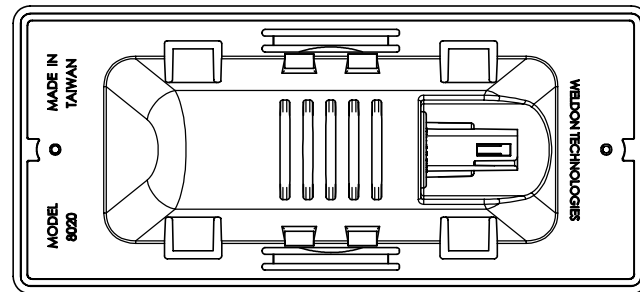
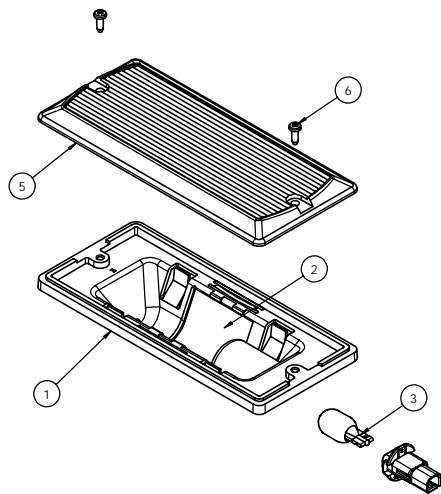


INTEGRAL CONNECTOR GEOMETRY - ACCEPTS DELPHI CONNECTOR #12047662



PANEL CUT-OUT DIMENSIONS

PANEL THICKNESS	"W"
0.030 - 0.050	2.050 - 2.130
0.050 - 0.080	2.060 - 2.145
0.080 - 0.120	2.070 - 2.165
0.120 - 0.140	2.080 - 2.185



ITEM	PART NUMBER	DESCRIPTION	8020-0001-30	8020-0101-30
			QTY	QTY
1	0B10-1465-00	HOUSING, NYLON - GLASS FILLED, WHITE	1	1
2	0C50-1541-00	ALUMINUM REFLECTOR	1	1
3	9018-0035-00	BULB, #906, WEDGE BASE, T5, 6CP	1	-
3	0E13-1469-00	BULB, #912, WEDGE BASE, T5, 12CP	-	1
4	0K90-1801-00	SOCKET, WEDGE BASE W/ INTEGRAL DELPHI CONN	1	1
5	8004-0000-30	LENS, IMPACT MODIFIED ACRYLIC, CLEAR	1	1
6	0F20-1453-10	SCREW	2	2

UNLESS OTHERWISE SPECIFIED DIMENSIONS ARE IN INCHES. TOLERANCES ARE: X.XXX ±.005 X.XX ±.010 X.X ±.015 ANGLES ±.1°	CAD GENERATED DRAWING. DO NOT MANUALLY UPDATE. APPROVED: [Signature] DATE: 12/5/03 DRAWN: BARNETT CHECKED: ST DATE: 12/5/03	WELDON TECHNOLOGIES, INC. 8020 SNAP-IN DOME LAMP DELPHI CONNECTOR CUSTOMER SPEC DRAWING
MATERIAL: [Blank]	DATE ENG: [Blank]	ISS: [Blank]
FINISH: [Blank]	SCALE: 1:1	REV: A
DO NOT SCALE DRAWING.	PROJECT NO. 00156	SCALE: 1:1 WELDON CUSTOMER GRAPHICS SHEET 1 OF 1