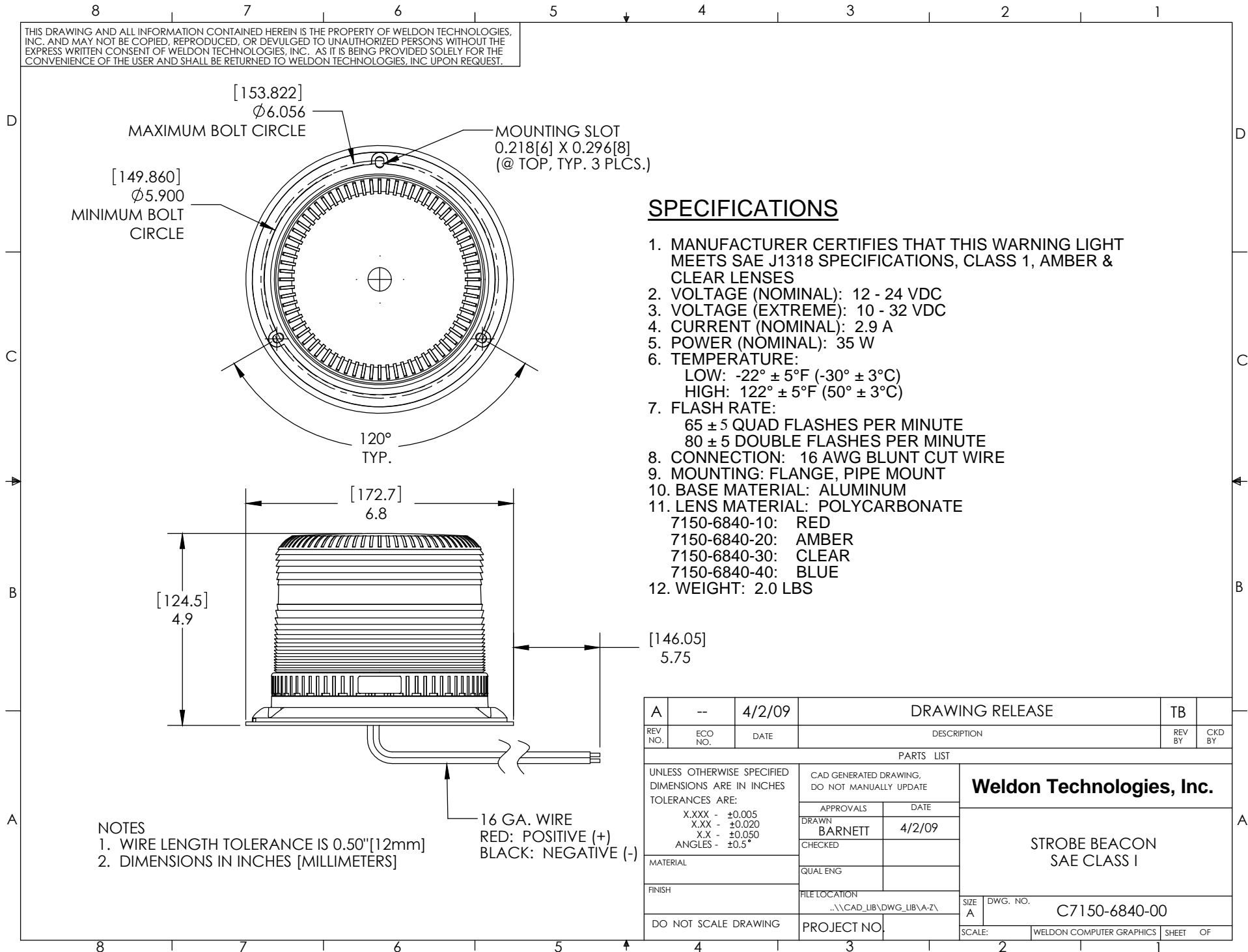


THIS DRAWING AND ALL INFORMATION CONTAINED HEREIN IS THE PROPERTY OF WELDON TECHNOLOGIES, INC. AND MAY NOT BE COPIED, REPRODUCED, OR DEVLGUTED TO UNAUTHORIZED PERSONS WITHOUT THE EXPRESS WRITTEN CONSENT OF WELDON TECHNOLOGIES, INC. AS IT IS BEING PROVIDED SOLELY FOR THE CONVENIENCE OF THE USER AND SHALL BE RETURNED TO WELDON TECHNOLOGIES, INC UPON REQUEST.



SPECIFICATIONS

1. MANUFACTURER CERTIFIES THAT THIS WARNING LIGHT MEETS SAE J1318 SPECIFICATIONS, CLASS 1, AMBER & CLEAR LENSES
2. VOLTAGE (NOMINAL): 12 - 24 VDC
3. VOLTAGE (EXTREME): 10 - 32 VDC
4. CURRENT (NOMINAL): 2.9 A
5. POWER (NOMINAL): 35 W
6. TEMPERATURE:
LOW: $-22^{\circ} \pm 5^{\circ}F$ ($-30^{\circ} \pm 3^{\circ}C$)
HIGH: $122^{\circ} \pm 5^{\circ}F$ ($50^{\circ} \pm 3^{\circ}C$)
7. FLASH RATE:
65 \pm 5 QUAD FLASHES PER MINUTE
80 \pm 5 DOUBLE FLASHES PER MINUTE
8. CONNECTION: 16 AWG BLUNT CUT WIRE
9. MOUNTING: FLANGE, PIPE MOUNT
10. BASE MATERIAL: ALUMINUM
11. LENS MATERIAL: POLYCARBONATE
7150-6840-10: RED
7150-6840-20: AMBER
7150-6840-30: CLEAR
7150-6840-40: BLUE
12. WEIGHT: 2.0 LBS

NOTES

1. WIRE LENGTH TOLERANCE IS 0.50"[12mm]
2. DIMENSIONS IN INCHES [MILLIMETERS]

16 GA. WIRE
RED: POSITIVE (+)
BLACK: NEGATIVE (-)

A	--	4/2/09	DRAWING RELEASE		TB	
REV NO.	ECO NO.	DATE	DESCRIPTION		REV BY	CKD BY
PARTS LIST						
UNLESS OTHERWISE SPECIFIED DIMENSIONS ARE IN INCHES TOLERANCES ARE: X.XXX - ± 0.005 X.XX - ± 0.020 X.X - ± 0.050 ANGLES - $\pm 0.5^{\circ}$			CAD GENERATED DRAWING, DO NOT MANUALLY UPDATE		Weldon Technologies, Inc. STROBE BEACON SAE CLASS I	
APPROVALS		DATE				
DRAWN BARNETT		4/2/09				
CHECKED						
MATERIAL			QUAL ENG			
FINISH			FILE LOCATION ..\\CAD_LIB\DWG_LIB\A-Z\		SIZE A	DWG. NO. C7150-6840-00
DO NOT SCALE DRAWING			PROJECT NO.		SCALE:	WELDON COMPUTER GRAPHICS SHEET OF