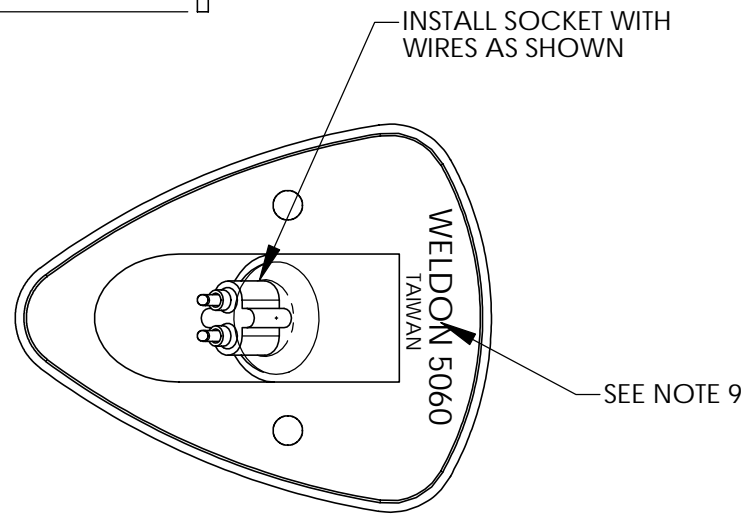
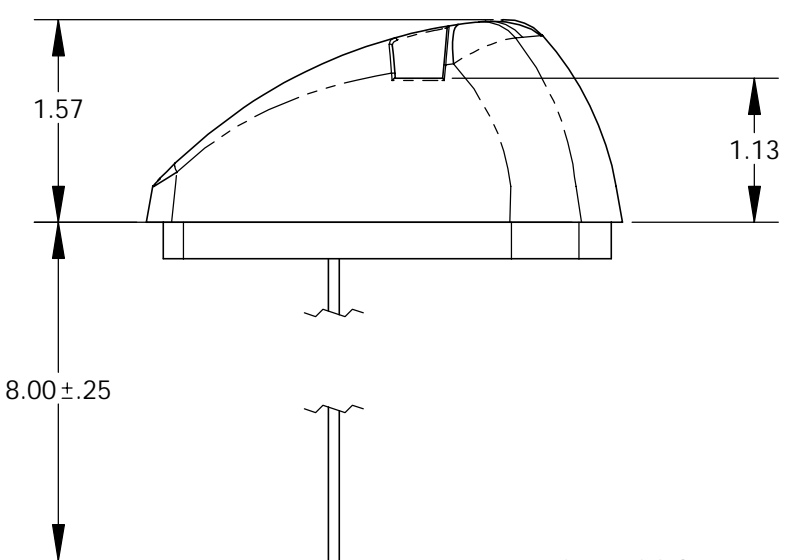
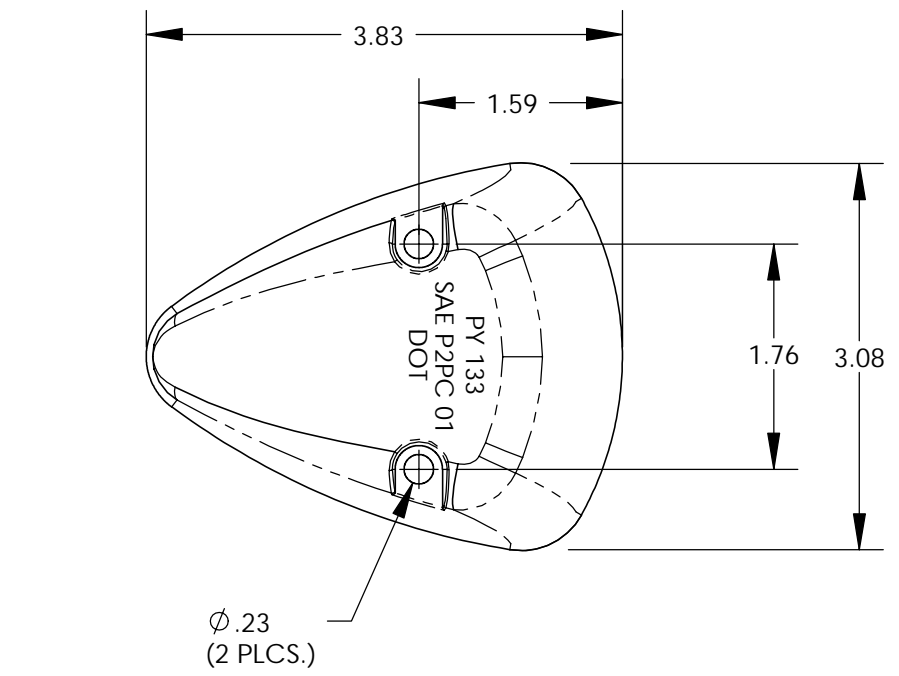
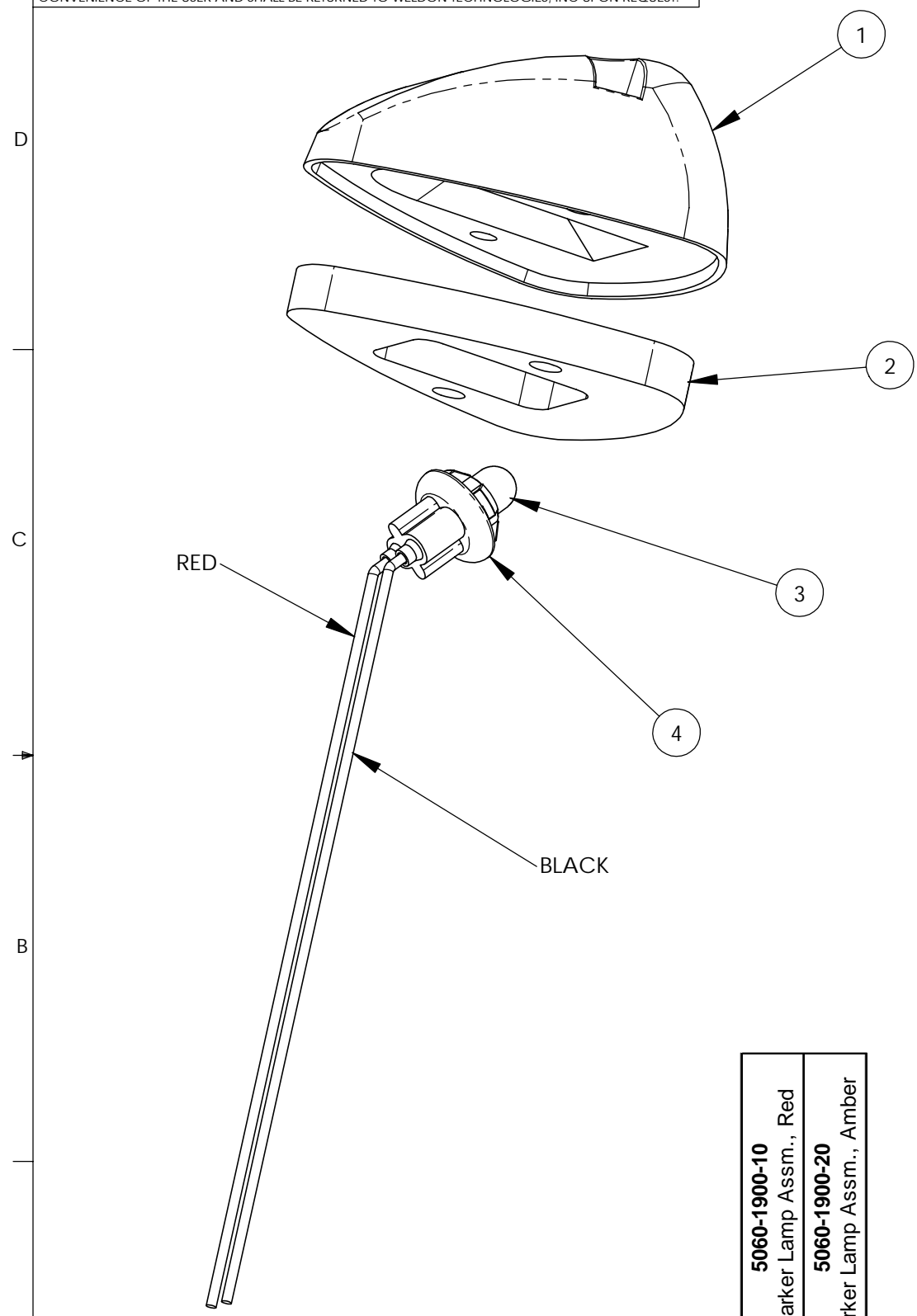


THIS DRAWING AND ALL INFORMATION CONTAINED HEREIN IS THE PROPERTY OF WELDON TECHNOLOGIES, INC. AND MAY NOT BE COPIED, REPRODUCED, OR DEVLUGED TO UNAUTHORIZED PERSONS WITHOUT THE EXPRESS WRITTEN CONSENT OF WELDON TECHNOLOGIES, INC. AS IT IS BEING PROVIDED SOLELY FOR THE CONVENIENCE OF THE USER AND SHALL BE RETURNED TO WELDON TECHNOLOGIES, INC. UPON REQUEST.

REVISIONS					
REV.	ECN	DESCRIPTION	DATE	BY	APVD
B	0446	DOCUMENT RELEASE	6/23/03	ST	



- NOTES:
- DIMENSIONS ARE FOR REFERENCE ONLY. ACTUAL PARTS MAY VARY IN APPEARANCE FROM THE DEPECTIONS ON THIS PRINT.
 - STANDARD PACK QTY IS 200 LAMPS PER CARTON.
 - LAMP IS SHIPPED WITH MATERIALS SHOWN. MOUNTING SCREWS ARE NOT INCLUDED.
 - THIS LAMP ASSEMBLY IS TO COMPLY WITH FMVSS 108 AND ANY SAE STANDARDS REFERENCED THEREIN WITH RESPECT TO THE FOLLOWING:
 - SIDE MARKER LAMPS, IDENTIFICATION LAMPS, CLEARANCE LAMPS AND INTERMEDIATE SIDE MARKER LAMPS PER SAE J592e, JUL72
 - LENS MATERIALS PER SAE J576 JUL91
 - COLOR PER SAE J578c FEB77
 - TEST REQUIREMENTS PER SAE J575e AUG70

5060-1900-10	Marker Lamp Assm., Red
5060-1900-20	Marker Lamp Assm., Amber

Item	Description	Qty/Assm
1	Lens/Housing Assembly, Sealed, Red	1 --
1	Lens/Housing Assembly, Sealed, Amber	-- 1
2	Mounting Pad, WTI P/N 0D10-1610-00	1 1
3	Bulb, #194 (2cp, 14V, T3-1/4 Wedge)	1 1
4	Socket, elastomeric, red and black lead wires	1 1

UNLESS OTHERWISE SPECIFIED DIMENSIONS ARE IN INCHES TOLERANCES ARE: X.XXX - ±0.005 X.XX - ±0.020 X.X - ±0.050 ANGLES - ±0.5°	CAD GENERATED DRAWING, DO NOT MANUALLY UPDATE		WELDON TECHNOLOGIES, INC.	
	APPROVALS	DATE		
	DRAWN	ST 6/23/03	CUSTOMER DRAWING MARKER LAMP, SEALED RED / AMBER	
	CHECKED			
MATERIAL	QUAL ENG	SIZE	PART NO.	REV.
FINISH	MFG ENG	B	C 5060-1900-00	B
DO NOT SCALE DRAWING	PROJ. NO.	SCALE: 1:1	WELDON COMPUTER GRAPHICS	SHEET 1 OF 1