



**3096, 3126 foam systems
95-125 gpm
Installation Instructions**

Bypass eductor

- Eductor is available with the following inlet and outlet connections:
2" NPT, 2" Victaulic and 2 1/2" NPT.
- Eductor may be installed in the horizontal or vertical position.
- Eductor inlet should be plumbed rigidly with 2" or 2-1/2" piping.
- Eductor outlet shall be plumbed with 2" minimum piping or flex hose assemblies to discharge connection.
- Foam lines from foam tank to metering head shall be a minimum of 3/4" I.D. (1" I.D. recommended).
- Foam line from metering head to Eductor shall be a minimum of 1/2" I.D.

Hard Piping – With 2" piping, use no more than two (2) 90° elbows between eductor and discharge connection (use of an Akron 635 Crosslay Elbow not included). Allow at least 6" straight pipe on outlet before any 90° elbow.

Flex Hose Assemblies – These assemblies are ideal for eductor discharge lines, since friction loss is insignificant. In addition, the Akron 635 Crosslay Elbow is designed with a full 2" waterway and cast turning vane to minimize friction loss. It is a good selection for eductor lines.

- Eductor handle positions can be easily and quickly changed like those of the Swing-Out Valve. Remove handle bolt and select eight (8) positions clockwise. Place stop plate on opposite side of stops and you get eight (8) positions counterclockwise.

Remote handle has two (2) 17/32" holes on 2-3/8" and 3-1/2" centers. Choose one for remote rod attachment.

Handle must be connected to remote rod so that when pulled out, the water bypass is closed. This allows only Eductor to be opened for foam use. See Figures 4 and 5 for typical installation and layout.

Metering panel Assembly

A. PANEL CUTOUT (FIGURE 1)

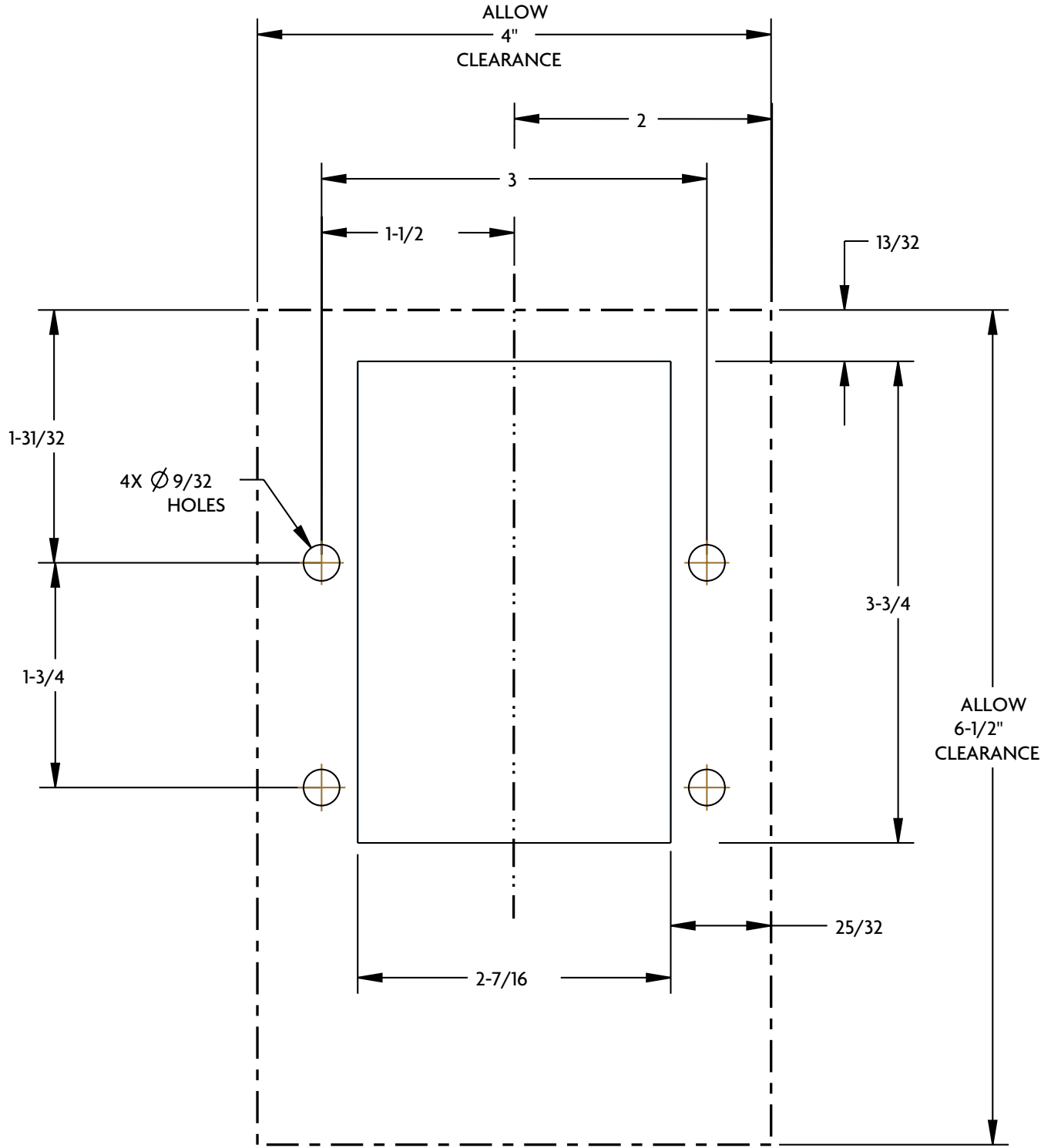
1. Cut opening in panel (as shown in Figure 1) to allow metering head to pass through panel.
2. Drill four (4) 9/32" holes on 3" center horizontally on the center line of metering head cutout as shown.

B. Metering head placement and instruction plate (Figure 2)

1. Fit metering head into the cutout with foam inlet port pointing up.
2. Align metering head to 9/32" holes and place instruction plate in alignment with same holes.
3. Install the metering head through the front of the pump panel and attach using the screws, lock washers and nuts provided.

FIGURE 1

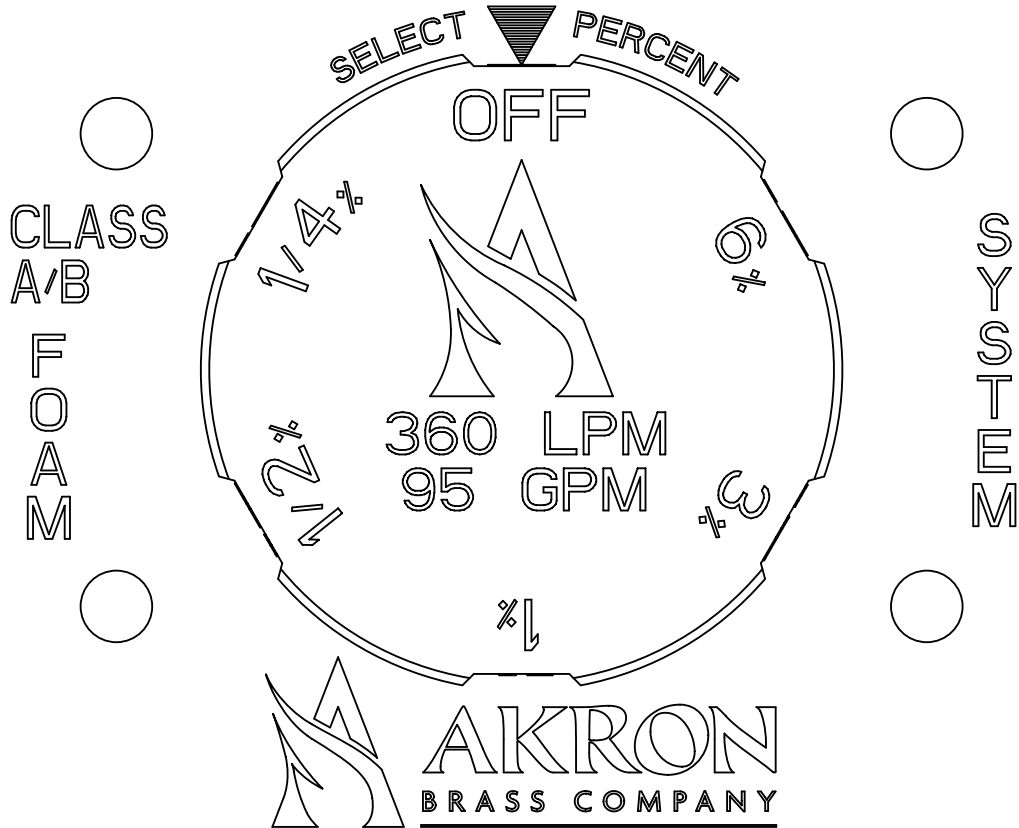
CUT-OUT DETAILS FOR TRUCK MOUNT FOAM PANEL



----- PLATE POSITION

FIGURE 2

VALVE	VALVE POSITION FOR		
	FOAM	WATER ONLY	FLUSH (3 MIN)
WATER	OPEN	OPEN	OPEN
EDUCTOR	OPEN (200 PSI)	CLOSE	OPEN (100 PSI)
FOAM	OPEN	CLOSE	CLOSE
FLUSH	CLOSE	CLOSE	OPEN



CAUTION: SEE OPERATION INSTRUCTIONS BEFORE USE.
 FLOW RATE OF AKRON BRASS NOZZLE MUST MATCH FOAM SYSTEM
 MAXIMUM HOSE LAY USING 100 PSI NOZZLE

95 GPM: 1-1/2" HOSE-150 FT, 125 GPM: 1-3/4" HOSE-150 FT,
 125 GPM: 2" HOSE-300 FT

BASED ON MAX. NOZZLE ELEVATION OF 10 FT. ABOVE EDUCTOR
 SEE INSTRUCTIONS FOR ADDITIONAL HOSE CONFIGURATIONS

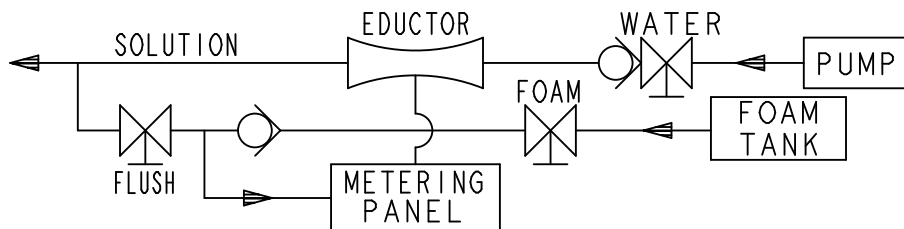
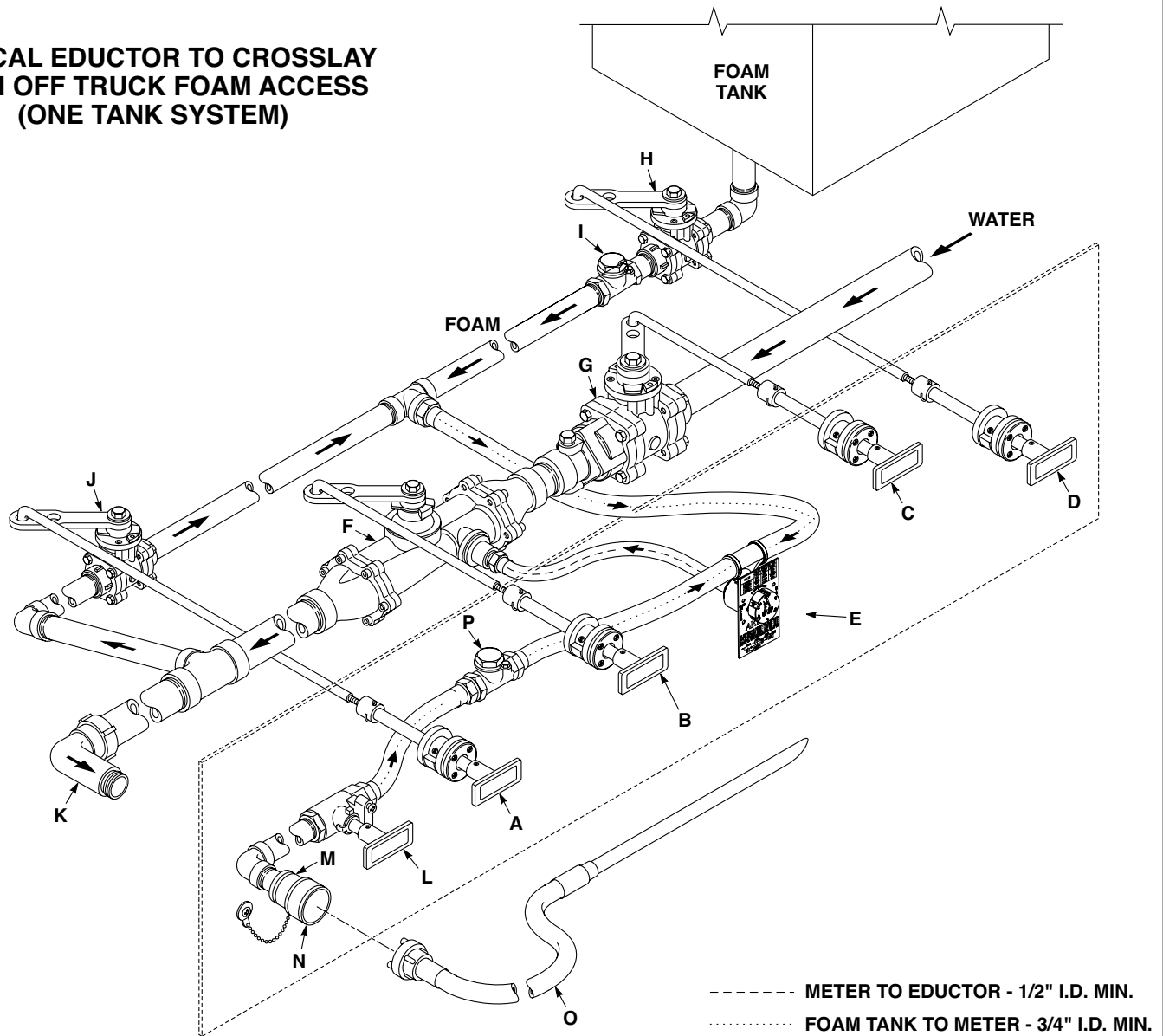


FIGURE 3

TYPICAL EDUCTOR TO CROSSLAY WITH OFF TRUCK FOAM ACCESS (ONE TANK SYSTEM)

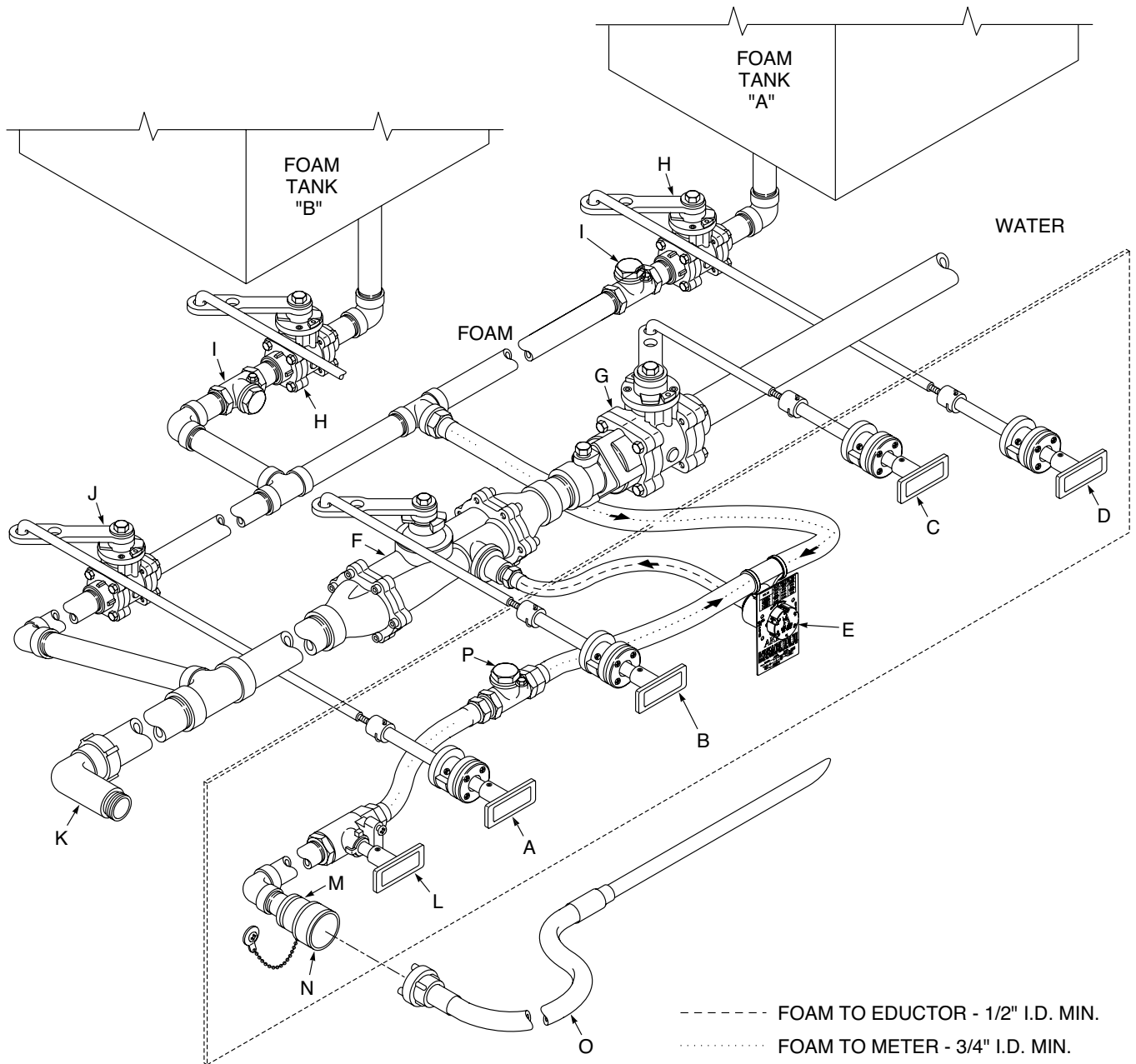


COMPONENTS FOR AKRON EDUCTOR FOAM SYSTEM

- | | |
|---------------------------------------------------------------------------------------------------------------------------------------------------------------------------------------------------------------------------------------------------------------------------------------------------------------------------------------------------------------------------------------------------------------------------------------------------------------------------------------------------------------|---------------------------------------------------------------------------------------------------------------------------------------------------------------------------------------------------------------------------------------------------------------------------------------------------------------------------------------------------------------------------------------------------------------------|
| <p>A: 1477 remote with FLUSH tag.
 B: 1477 Remote with EDUCTOR tag.
 C: 1477 Remote with WATER tag.
 D: 1477 Remote with FOAM tag.
 D: 1477 Remote with FOAM tag (for two tank system).
 E: 3096 or 3126 Foam Metering Dial.
 F: 3096 or 3126 Bypass Eductor.
 G: 8820 - P1-S X P30-SCV (Check Valve) x R-1 Swingout Valve.
 H: 8810 - P1-S x P1-S x R-1 - 1" Foam Valve.
 I: 1" Check Valve.</p> | <p>J: 8810 - P1-S x P1-S x R-1 - 1" Flush Valve.
 K: Style 635 - 2" NPT x 1 1/2" Crosslay Elbow.
 L: Style 57 - 3/4" Off Truck Foam Valve - In 3128 Kit.
 M: 25mm Storz x 3/4" NPT Panel Fitting - In 3128 Kit.
 N: Dust Plug with chain - In 3128 Kit.
 O: 25mm Storz x 5 ft. Pick-up hose assembly - In 3128 Kit.
 P: 1" Check Valve.</p> |
|---------------------------------------------------------------------------------------------------------------------------------------------------------------------------------------------------------------------------------------------------------------------------------------------------------------------------------------------------------------------------------------------------------------------------------------------------------------------------------------------------------------|---------------------------------------------------------------------------------------------------------------------------------------------------------------------------------------------------------------------------------------------------------------------------------------------------------------------------------------------------------------------------------------------------------------------|

FIGURE 4

TYPICAL EDUCTOR TO CROSSLAY WITH OFF TRUCK FOAM ACCESS (TWO TANK SYSTEM)



COMPONENTS FOR AKRON EDUCTOR FOAM SYSTEM

- A: 1477 remote with FLUSH tag.
- B: 1477 Remote with EDUCTOR tag.
- C: 1477 Remote with WATER tag.
- D: 1477 Remote with FOAM tag.
- D: 1477 Remote with FOAM tag (for two tank system).
- E: 3096 or 3126 Foam Metering Dial.
- F: 3096 or 3126 Bypass Eductor.
- G: 8820 - P1-S X P30-SCV (Check Valve) x R-1 Swingout Valve.
- H: 8810 - P1-S x P1-S x R-1 - 1" Foam Valve. (Two Valves for Two Tank Systems)

- I: 1" Check Valve. (Two Valves for Two Tank Systems)
- J: 8810 - P1-S x P1-S x R-1 - 1" Flush Valve.
- K: Style 635 - 2" NPT x 1 1/2" Crosslay Elbow.
- L: Style 57 - 3/4" Off Truck Foam Valve - In 3128 Kit.
- M: 25mm Storz x 3/4" NPT Panel Fitting - In 3128 Kit.
- N: Dust Plug with chain - In 3128 Kit.
- O: 25mm Storz x 5 ft. Pick-up hose assembly - In 3128 Kit.
- P: 1" Check Valve.

NOTES



ISO 9001 REGISTERED COMPANY

PHONE: 330.264.5678 or 800.228.1161 | FAX: 330.264.2944 or 800.531.7335 | akronbrass.com

REVISED: 05/19

WARRANTY AND DISCLAIMER: We warrant Akron Brass products for a period of five (5) years after purchase against defects in materials or workmanship. Akron Brass will repair or replace product which fails to satisfy this warranty. Repair or replacement shall be at the discretion of Akron Brass. Products must be promptly returned to Akron Brass for warranty service.

We will not be responsible for: wear and tear; any improper installation, use, maintenance or storage; negligence of the owner or user; repair or modification after delivery; damage; failure to follow our instructions or recommendations; or anything else beyond our control. WE MAKE NO WARRANTIES, EXPRESS OR IMPLIED, OTHER THAN THOSE INCLUDED IN THIS WARRANTY STATEMENT, AND WE DISCLAIM ANY IMPLIED WARRANTY OF MERCHANTABILITY OR FITNESS FOR ANY PARTICULAR PURPOSE. Further, we will not be responsible for any consequential, incidental or indirect damages (including, but not limited to, any loss of profits) from any cause whatsoever. No person has authority to change this warranty.

© Akron Brass Company. 2019 All rights reserved. No portion of this can be reproduced without the express written consent of Akron Brass Company.