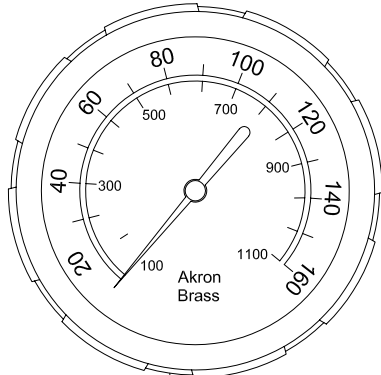
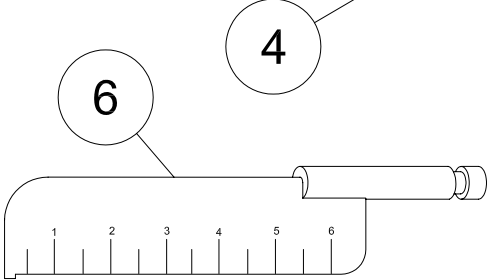
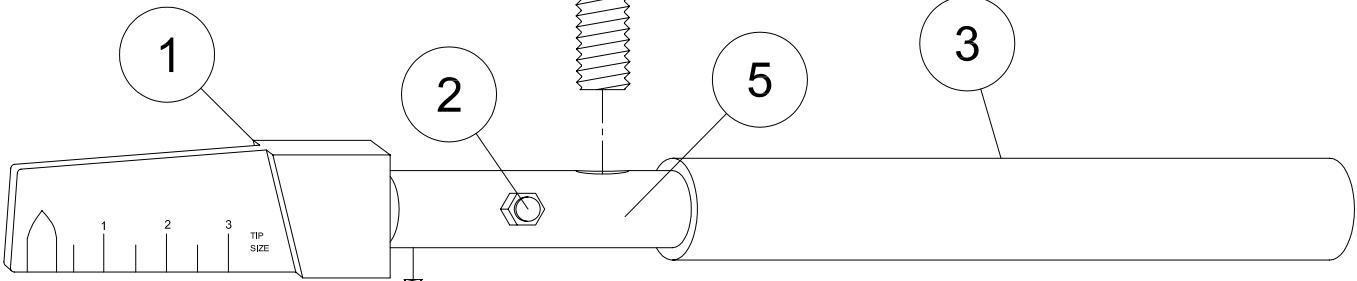


HAND HELD PITOT (HH-PITOT)

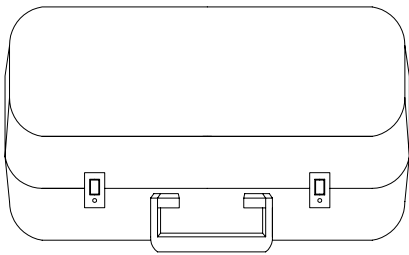


3-1/2" PRESSURE GAUGES	
FK-350	0-60 PSI, 0-414 kPa
FK-351	0-100 PSI, 0-689 kPa
FK-352	0-160 PSI, 0-1100 kPa - STD.
FK-360	0-200 PSI, 0-1379 kPa
FK-353	0-300 PSI, 0-2000 kPa
FK-354	0-400 PSI, 0-2800 kPa
FK-355	0-600 PSI, 0-4000 kPa



PARTS LIST			
ITEM NO.	PART NO.	DESCRIPTION	QTY.
1	FK-211	PITOT BLADE ASSY.	1
2	FK-100	BLEEDER VALVE (BACK SIDE)	1
3	725-CE	CLOSED END GRIP	1
4	126-SS	SET SCREW	1
5	FK-193	HAND HELD PITOT HANDLE	1
6	FK-211C	PITOT BLADE ASSY.*	1

NOTES:
 *REPLACEMENT PITOT BLADE ASSEMBLY FOR HAND HELD PITOTS PURCHASED BEFORE AUGUST 2001.



CASES		
FK-232	SMALL CASE	19" W x 13-3/8" D x 7" H-STD.
FK-227	SMALL FOAM INSERT FOR FK-232 CASE.	

ISO-9001 CERTIFIED

Akron Brass Company
 A Premier Farnell Company
 501 N. Cummings Lane, Washington, IL 61571
 Phone: (800)214-6800 Fax: (800)214-6808