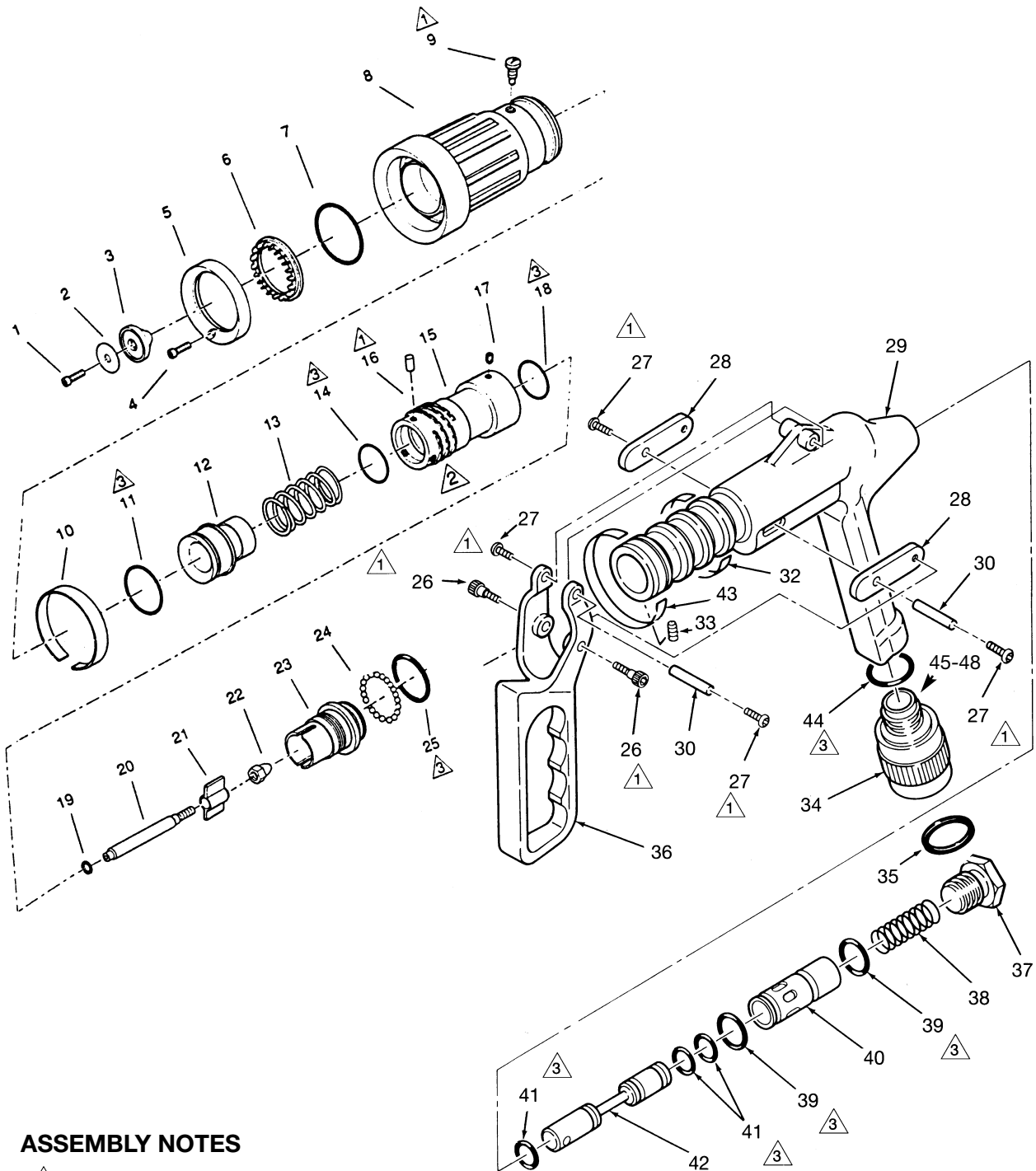
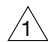
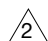
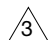


TECHNICAL SERVICE PARTS LIST



ASSEMBLY NOTES

-  Use Loctite 222 or 113
-  Permabond.
-  Use Low-Temp Lubriplate.
Use Parker O-Ring Lubricant or equivalent petroleum base lubricant.

ITEM NO.	DESCRIPTION	PART NUMBER	QUANTITY
1	Button Head Screw	7-65-179	1
2	Flow Label 50 LPM @ 7 Bar	7-29-316	1
2	Flow Label 100 LPM @ 7 Bar	7-29-317	1
2	Flow Label 150 LPM @ 7 Bar	7-29-318	1
2	Flow Label 13 GPM @ 100 PSI	7-29-313	1
2	Flow Label 25 GPM @ 100 PSI	7-29-314	1
2	Flow Label 40 GPM @ 100 PSI	7-29-315	1
3	Baffle Head	109439	1
4	Socket Head Cap Screw	7-60-041	2
5	Turbine Retaining Ring	109437	1
6	Turbine Teeth	7-72-024	1
7	O-Ring	7-57-309	1
8	Bumper Assembly	4801-2001	1
9	Pattern Stop Screw	7-69-489	1
10	Pattern Indicating Band	7-04-494	1
11	O-Ring	7-57-331	1
12	Throat	109435	1
13	Spring	7-69-217	1
14	O-Ring	7-57-330	1
15	Nozzle Body	109434	1
16	Pin	7-44-178	3
17	Socket Head Screw	7-65-025	1
18	O-Ring	7-57-329	1
19	Flow Spacers	†	
20	Baffle Stem	109441	1
21	Spider	7-69-549	1
22	Acorn Nut	7-35-054	1
23	Spider Retainer	109591	1
24	Locking Balls	**	22
25	O-Ring	7-57-283	1
26	Shoulder Screw	7-65-145	2
27	Button Head Screw	7-63-061	4
28	Link	109085	2
29	Shutoff Body	109080	1
30	Pin	109086	2
32	Band	7-03-374	4
33	Socket Head Set Screw	7-65-022	1
34	Swivel* NH	116248	1
34	Swivel* BSP	116249	1
35	Swivel Gasket	7-17-047	1
36	Trigger	109081	1
37	Spring Holder	109083	1
38	Spring	7-69-383	1
39	O-Ring	7-57-274	2
40	Sleeve	101859	1
41	O-Ring	7-57-275	3
42	Piston	101860	1
43	Indicating Band	7-03-375	1
44	O-Ring	7-57-105	1
45	Swivel Adapter	116247	1
46	O-Ring	7-57-064	1
47	Ball Bearings	7-04-018	23
48	Set Screw	7-65-134	1
	ADDITIONAL ITEMS - NOT SHOWN		
-	Lock Open Latch	107713	1
-	Washer For Lock Open Latch	7-68-276	1
-	Roll Pins For Lock Open Latch	7-04-049	2
-	Rear Bumper	7-04-377	1
-	Rear Bumper Screws	7-65-028	2

*For other threads order by description and thread size (ODM and TPI) or Akron Thread Code.

**Packet of 50 Locking Balls — P/N 109042.

† To change or replace flow spacers call Customer Service for Flow Kits.