



3061, 3096, 3126 FOAM SYSTEMS 60-95-125 GPM INSTALLATION INSTRUCTIONS

BYPASS EDUCTOR

- Eductor is available with the following inlet and outlet connections:
Connections available in 2" NPT, 2" Victaulic and 2 1/2" NPT.
- Eductor may be installed in the horizontal or vertical position.
- Eductor inlet should be plumbed rigidly with 2" or 2-1/2" piping.
- Eductor outlet shall be plumbed with 2" minimum piping or flex hose assemblies to discharge connection.
- Foam lines from foam tank to metering head shall be a minimum of 3/4" (1" recommended).
- Foam line from metering head to Eductor shall be a minimum of 1/2".

Hard Piping – With 2" piping, use no more than two (2) 90° elbows between eductor and discharge connection (use of an Akron 635 Crosslay Elbow not included). Allow at least 6" straight pipe on outlet before any 90° elbow.

Flex Hose Assemblies – These assemblies are ideal for eductor discharge lines, since friction loss is insignificant.

In addition, the Akron 635 Crosslay Elbow is designed with a full 2" waterway and cast turning vane to minimize friction loss. It is a good selection for eductor lines.

- Eductor handle positions can be easily and quickly changed like those of the swing-Out Valve. Remove handle bolt and select eight (8) positions clockwise. Place stop plate on opposite side of stops and you get eight (8) positions counterclockwise.

Remote handle has two (2) 17/32" holes on 2-3/8" and 3-1/2" centers. Choose one for remote rod attachment.

Handle must be connected to remote rod so that when pulled out, the water bypass is closed. This allows only Eductor to be opened for foam use. See Figures 4 and 5 for typical installation and layout.

METERING PANEL ASSEMBLY

A. PANEL CUTOUT (FIGURE 1)

1. Cut opening in panel (as shown in Figure 1) to allow metering head to pass through panel.
2. Drill two (2) 5/16" holes on 2-1/2" center horizontally on the center line of metering head cutout as shown.

B. METERING HEAD PLACEMENT AND INSTRUCTION PLATE (FIGURE 2)

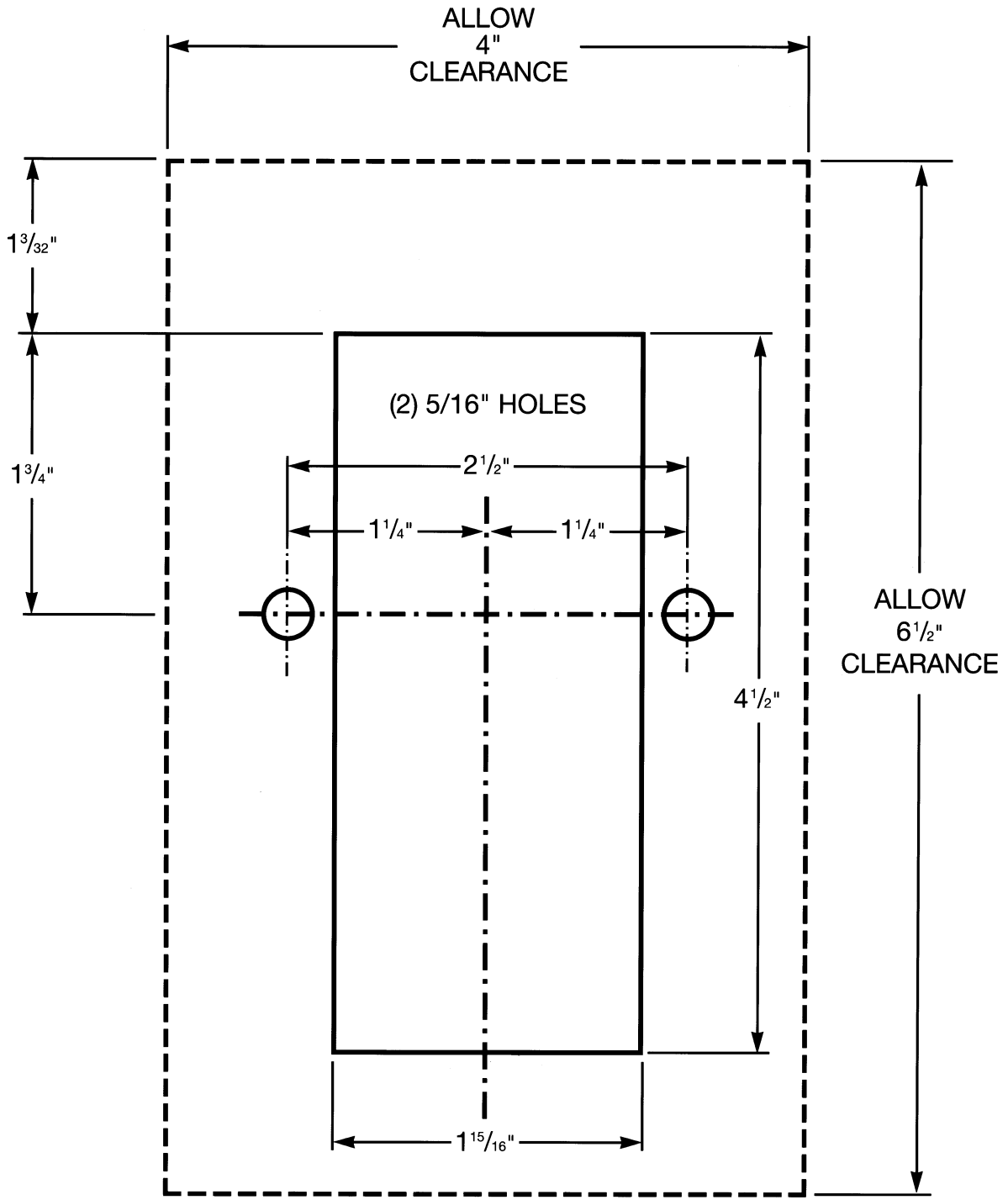
1. Fit metering head into cutout and turn 90° left or right so angled inlet is directed towards foam supply.

2. Align metering head to 5/16" holes and place instruction plate in alignment with same holes.
3. Use Loctite 222 or Permabond HH113 on 1/4-20 screw threads provided.
4. Insert provided stainless steel screws through instruction plate, panel, and into tapped holes in metering head.
5. Secure screws to a point where plate can be visually straightened. Tighten screws.

C. DIAL PLACEMENT

1. Place large spring in recess where square nests. Push spring-loaded dial down to fit square. Engage 1/4-20 Phillips screw and tighten (use Loctite 222 or Permabond LM113 on screw).
2. Rotate dial counterclockwise until it stops (this will be 6% position).
3. Peel adhesive cover off back of dial plate (FIGURE 3).
4. Place on a clean dial surface aligning 6 with select percent arrow on instruction plate.
5. Rotate dial clockwise to each percent detent for position verification.

FIGURE 1



----- PLATE POSITION

FIGURE 2

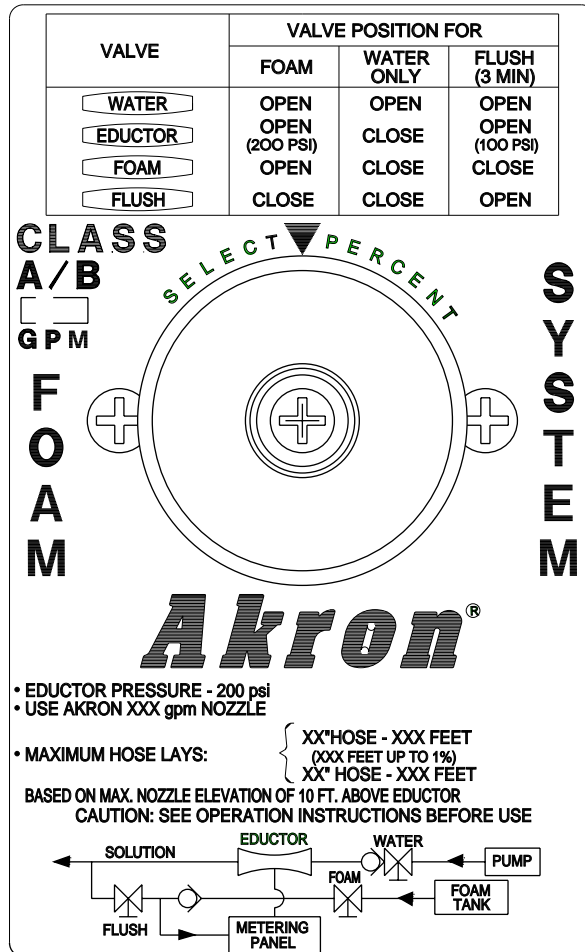


FIGURE 3

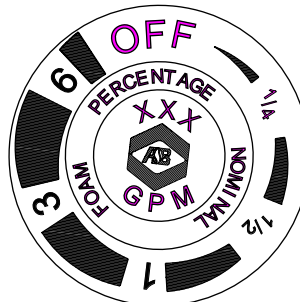
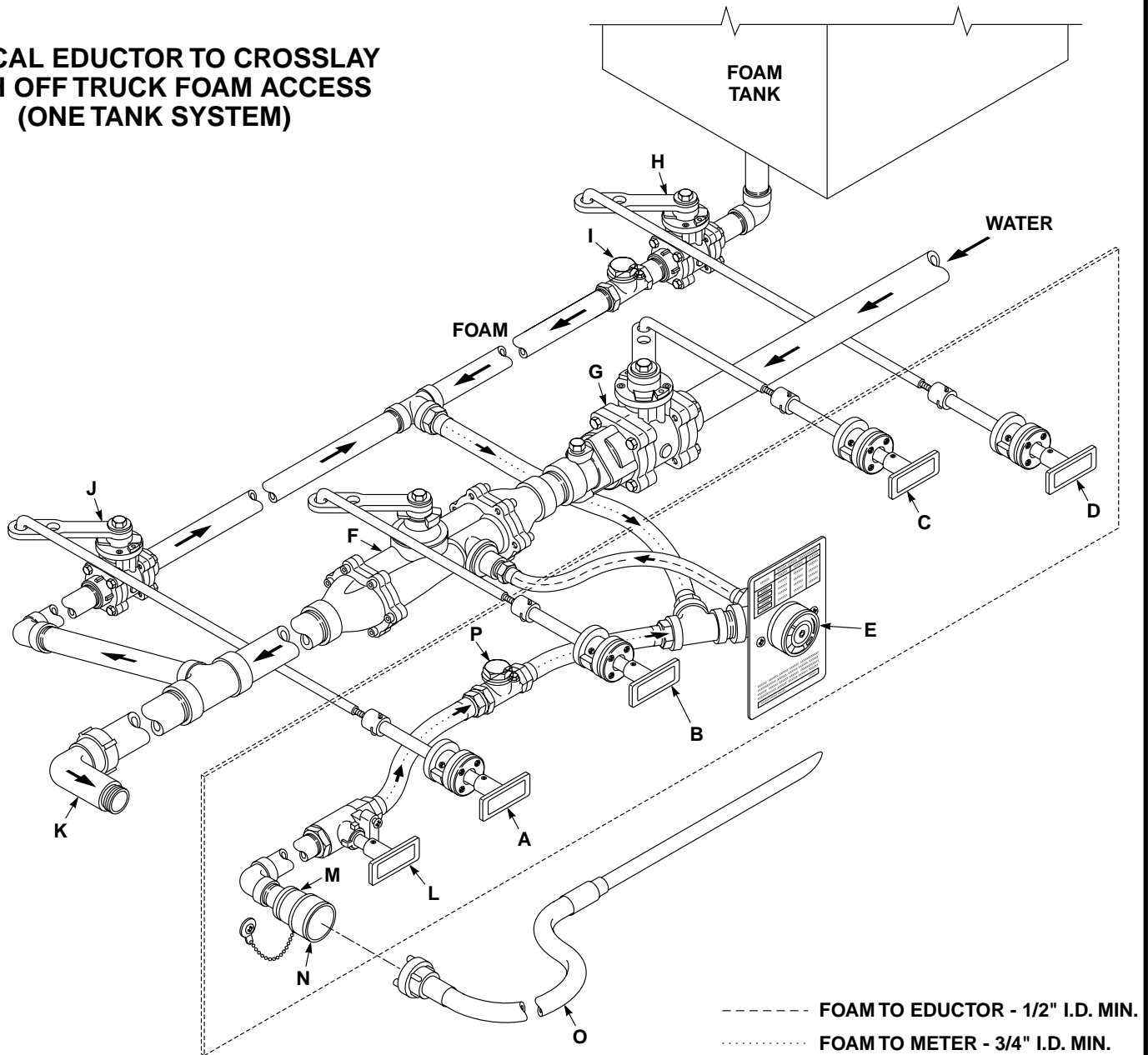


FIGURE 4

TYPICAL EDUCTOR TO CROSSLAY WITH OFF TRUCK FOAM ACCESS (ONE TANK SYSTEM)



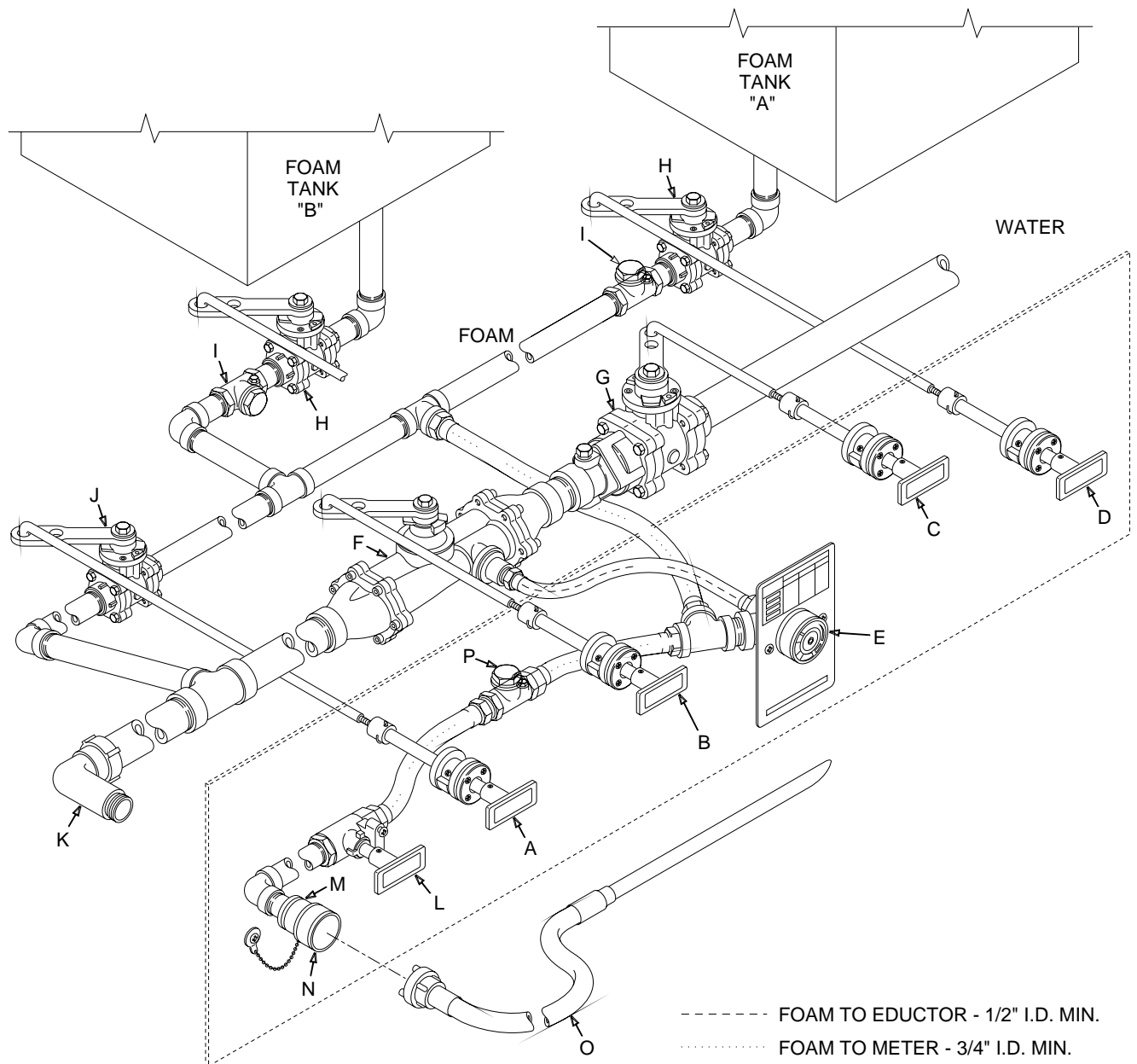
COMPONENTS FOR AKRON EDUCTOR FOAM SYSTEM

- A: 1477 remote with FLUSH tag.
- B: 1477 Remote with EDUCTOR tag.
- C: 1477 Remote with WATER tag.
- D: 1477 Remote with FOAM tag.
- E: 1477 Remote with FOAM tag (for two tank system).
- F: 3061, 3096 or 3126 Foam Metering Panel.
- G: 3061, 3096 or 3126 Bypass Eductor.
- H: 7820 - P1-S X P30-SCV (Check Valve) x R-1 Swingout Valve.
- I: 7810 - P1-S x P1-S x R-1 - 1" Foam Valve.
- J: 7810 - P1-S x P1-S x R-1 - 1" Foam Valve (for two tank system).
- K: 1" Check Valve.
- L: 1" Check Valve (for two tank system).

- J: 7810 - P1-S x P1-S x R-1 - 1" Flush Valve.
- K: Style 635 - 2" NPT x 1 1/2" Crosslay Elbow.
- L: Style 57 - 3/4" Off Truck Foam Valve - In 3128 Kit.
- M: 25mm Storz x 3/4" NPT Panel Fitting - In 3128 Kit.
- N: Dust Plug with chain - In 3128 Kit.
- O: 25mm Storz x 5 ft. Pick-up hose assembly - In 3128 Kit.
- P: 1" Check Valve.

FIGURE 5

TYPICAL EDUCTOR TO CROSSLAY WITH OFF TRUCK FOAM ACCESS (TWO TANK SYSTEM)



COMPONENTS FOR AKRON EDUCTOR FOAM SYSTEM

- A: 1477 remote with FLUSH tag.
- B: 1477 Remote with EDUCTOR tag.
- C: 1477 Remote with WATER tag.
- D: 1477 Remote with FOAM tag.
- E: 1477 Remote with FOAM tag (for two tank system).
- F: 3061, 3096 or 3126 Foam Metering Panel.
- G: 3061, 3096 or 3126 Bypass Eductor.
- H: 7820 - P1-S X P30-SCV (Check Valve) x R-1 Swingout Valve.
- I: 7810 - P1-S x P1-S x R-1 - 1" Foam Valve.
- J: 7810 - P1-S x P1-S x R-1 - 1" Foam Valve (for two tank system).
- K: 1" Check Valve.
- L: 1" Check Valve (for two tank system).

- J: 7810 - P1-S x P1-S x R-1 - 1" Flush Valve.
- K: Style 635 - 2" NPT x 1 1/2" Crosslay Elbow.
- L: Style 57 - 3/4" Off Truck Foam Valve - In 3128 Kit.
- M: 25mm Storz x 3/4" NPT Panel Fitting - In 3128 Kit.
- N: Dust Plug with chain - In 3128 Kit.
- O: 25mm Storz x 5 ft. Pick-up hose assembly - In 3128 Kit.
- P: 1" Check Valve.

NOTES



ISO 9001 REGISTERED COMPANY

PHONE: 330.264.5678 or 800.228.1161 | FAX: 330.264.2944 or 800.531.7335 | www.akronbrass.com
Available in Canada through AKRON MANUFACTURING COMPANY
PHONE: 519.773.8431 | FAX: 519.773.3794

REVISED 02/01

WARRANTY AND DISCLAIMER: We warrant Akron Brass products for a period of five (5) years after purchase against defects in materials or workmanship. Akron Brass will repair or replace product which fails to satisfy this warranty. Repair or replacement shall be at the discretion of Akron Brass. Products must be promptly returned to Akron Brass for warranty service.

We will not be responsible for: wear and tear; any improper installation, use, maintenance or storage; negligence of the owner or user; repair or modification after delivery; damage; failure to follow our instructions or recommendations; or anything else beyond our control. WE MAKE NO WARRANTIES, EXPRESS OR IMPLIED, OTHER THAN THOSE INCLUDED IN THIS WARRANTY STATEMENT, AND WE DISCLAIM ANY IMPLIED WARRANTY OF MERCHANTABILITY OR FITNESS FOR ANY PARTICULAR PURPOSE. Further, we will not be responsible for any consequential, incidental or indirect damages (including, but not limited to, any loss of profits) from any cause whatsoever. No person has authority to change this warranty.

© Premier Farnell Corporation. 2000 All rights reserved. No portion of this can be reproduced without the express written consent of Premier Farnell Corporation.

A Premier Farnell Company