



Style 9110 Field Service Kit for

Turbojet® Nozzles

- 1722, 1729 2½" with 1½" Thread
- 1722P, 1729P 2½" with 1½" Thread (Pyrolite®)
- 1723P 2½" with Pistol Grip and 1½" Thread (Pyrolite)
- 1725 2½"
- 1725P 2½" (Pyrolite)

Akromatic® II Nozzles

- 5225 2½"
- 5226 2½" with 1½" Thread
- 5227 2½" with Pistol Grip
- 5228 2½" with Pistol Grip and 1½" Thread
- 5235 2½"
- 5236 2½" with 1½" Thread
- 5237 2½" with Pistol Grip
- 5238 2½" with Pistol Grip and 1½" Thread

Marauder® Nozzles

- 4625 2½"
- 4626 2½" with Pistol Grip
- 4629 2½" with 1½" Thread
- 4630 2½" with Pistol Grip and 1½" Thread



PHONE: 330.264.5678 or 800.228.1161 | FAX: 330.264.2944 or
800.531.7335 | www.akronbrass.com
Available in Canada through AKRON MANUFACTURING COMPANY
PHONE: 519.773.8431 | FAX: 519.773.3794

REVISED 9/05

WARRANTY AND DISCLAIMER: We warrant Akron Brass products for a period of five (5) years after purchase against defects in materials or workmanship. Akron Brass will repair or replace product which fails to satisfy this warranty. Repair or replacement shall be at the discretion of Akron Brass. Products must be promptly returned to Akron Brass for warranty service. We will not be responsible for: wear and tear; any improper installation, use, maintenance or storage; negligence of the owner or user; repair or modification after delivery; damage, failure to follow our instructions or recommendations; or anything else beyond our control. WE MAKE NO WARRANTIES, EXPRESS OR IMPLIED, OTHER THAN THOSE INCLUDED IN THIS WARRANTY STATEMENT, AND WE DISCLAIM ANY IMPLIED WARRANTY OF MERCHANTABILITY OR FITNESS FOR ANY PARTICULAR PURPOSE. Further, we will not be responsible for any consequential, incidental or indirect damages (including, but not limited to, any loss of profits) from any cause whatsoever. No person has authority to change this warranty.

© Premier Farnell Corporation, 2000 All rights reserved. No portion of this can be reproduced without the express written consent of Premier Farnell Corporation.

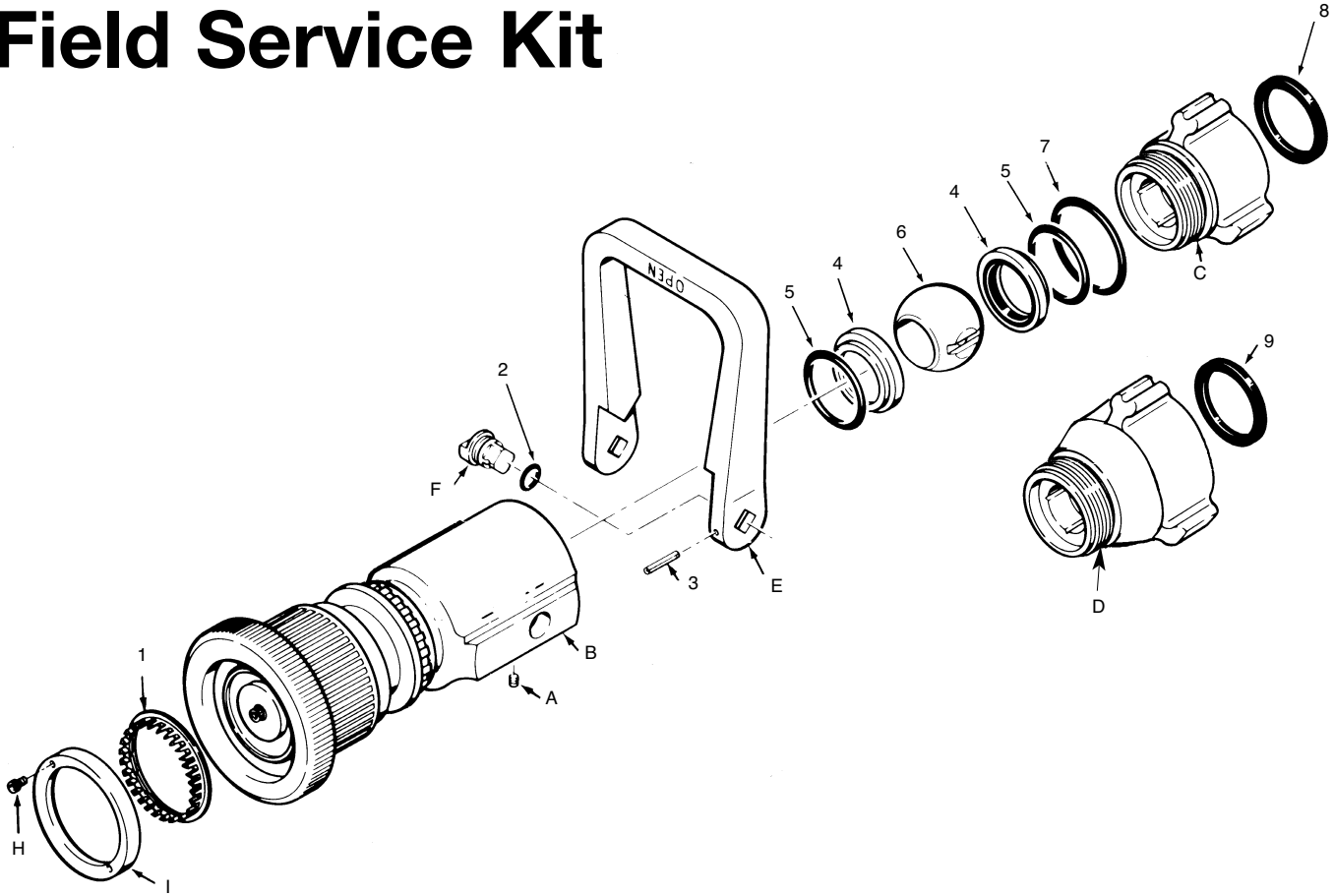
A Premier Farnell Company



AKRON

BRASS COMPANY

Style 9110 Field Service Kit



ITEM NO.	DESCRIPTION	PART NO.
1	Turbine Teeth (Turbojet & Marauder)	7-72-025
1	Turbine Teeth (Akromatic)	7-72-119
1	Turbine Teeth* (2 1/2" Turbojets)	7-72-149
2	O-Ring (2)	7-57-269
3	Roll Pin (2)	7-44-062
4	O-Ring (2)	7-57-268
5	Seat (2)	7-69-243
6	Ball	7-04-029
7	O-Ring	7-57-265
8	1 1/2" Gasket	7-17-042
9	2 1/2" Gasket	7-17-043

Parts included in this kit are normally all that are required to repair leaks in the shut-off area. If additional nozzle components are required, contact Akron Brass for the appropriate technical service bulletin or return the nozzle to our factory: Akron Brass Co., Old Mansfield Rd., Wooster, Ohio 44691 or Akron Manufacturing Co., P.O. Box 280, Aylmer, Ontario N5H 2R9.

*Turbine Teeth are not to be split.

FIELD SERVICE KIT INSTRUCTIONS

DISASSEMBLY

1. Remove the swivel gasket (8 or 9).
2. Remove the set screw (A) at the swivel end of the shut-off body (B). Depending on the age of the nozzle, it will require a $\frac{1}{8}$ " Allen wrench (for a $\frac{1}{4}$ -20 screw) or a $\frac{3}{32}$ " Allen wrench (for a 10-24 screw).
3. a) For Styles 1725, 1725P, 4625, 4626, 5225, 5227, 5235 and 5237 insert a square tool $1\frac{1}{16}$ " square (for a $2\frac{1}{2}$ " swivel adapter) into the grooves in the swivel adapter (D) and remove (counterclockwise).
b) For Styles 1722, 1722P, 1723P, 1729, 1729P, 4629, 4630, 5226, 5228, 5236 and 5238, insert a tool $1\frac{3}{16}$ " square, (for $1\frac{1}{2}$ " swivel adapter), into the grooves in the swivel adapter (C) and remove (counterclockwise).
4. Remove the O-Ring (7) from the inlet adapter (C or D).
5. Remove the seat and O-Ring (4 and 5) from the inlet adapter (C or D).
NOTE: Any plastic spacer ring(s) must remain in the swivel adapter recess under the seat and O-Ring for proper reassembly.
6. Turn the handle (E) into the open position and remove the ball (6).
7. Mark the end of the trunnions (F) and handle so they can be reassembled in exactly the same position. (Use chalk, grease pencil, etc.).
8. Take the rivet supplied in the service parts kit and drive out the roll pins (3) securing the handle to the trunnions.
9. Push the trunnions into the shutoff body until they are free. Remove the handle and trunnions.
10. Remove the O-Rings (2) from the trunnions.
11. Remove the front seat and O-Ring (4 and 5). Depending on the age of the nozzle the seat may not have an O-Ring. The new seats must be installed with an O-Ring.
12. Remove the two set screws (H) on the turbine retaining ring (I) with a $\frac{3}{32}$ " or $\frac{7}{64}$ " Allen wrench.
13. Remove the turbine retaining ring (I).
14. Remove the turbine teeth (1).

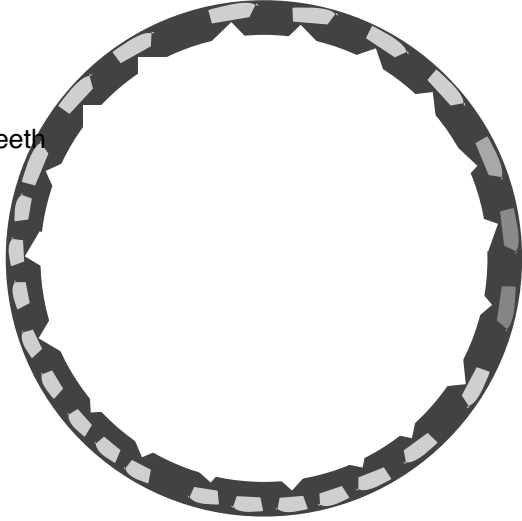
ASSEMBLY

NOTE: All O-Rings must be lubricated with O-Ring grease before assembly.

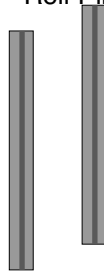
1. Install the new O-Rings (4) on the new seats (5).
2. Insert one new seat with O-Ring into the shutoff body (B).
3. Install the new O-Rings (2) on the trunnions (F).
4. Place the handle (E) over the trunnions holes with the "closed" lettering facing the inlet.
5. Install the trunnions from inside the shutoff body, using the marks (Disassembly Step 7) to position properly.
6. Install the new roll pins (3) to secure the handle to the trunnions.
7. Turn the handle into the closed position and insert the new ball (6).
8. Install the other new seat with O-Ring into the recess of the inlet adapter (C or D).
NOTE: To be placed above the fiber spacer rings if so equipped.
9. Install the new O-Ring (7) in the shutoff body recess.
10. With the handle in the closed position, thread the inlet adapter into the shutoff body. (Continue tightening until resistance is felt when opening and closing the shutoff.)
11. Install the new swivel gasket (8 or 9).
12. Install the new turbine teeth (1).
13. Line up screw holes with the holes in the nozzle body and place the turbine retaining ring (I) back into position.
14. Install and tighten the set screws (H) which secure the retaining ring.
15. Test the nozzle with water to determine if the shutoff functions properly. If a small leak is present, tighten the swivel adapter slightly to eliminate the leak.
16. Once the shutoff functions properly, observe the swivel adapter through the set screw hole in the shutoff body. If a full thread is visible, drill a slight recess for the set screw (for a 10-24 set screw, use a #25 drill bit; for a $\frac{1}{4}$ -20 use a $\frac{3}{16}$ " drill bit). Install and tighten the set screw (A).

USE THESE ILLUSTRATIONS TO IDENTIFY THE VARIOUS PARTS IN THIS KIT

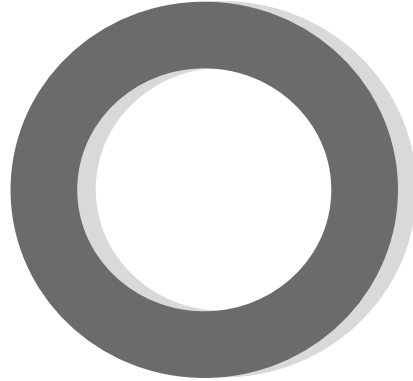
Item No. 1
PN 7-72-152
or
7-72-151
or
7-72-149
Turbine Teeth



Item No. 3
PN 7-44-062
Roll Pin (2)



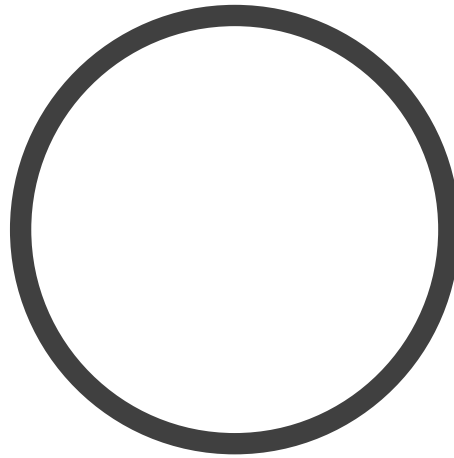
Item No. 6
PN 7-04-029
Ball



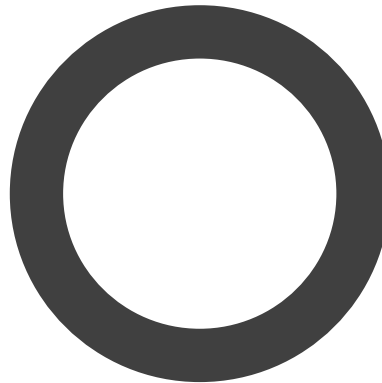
Item No. 2
PN 7-57-269
O-Ring (2)
Handle Trunnion



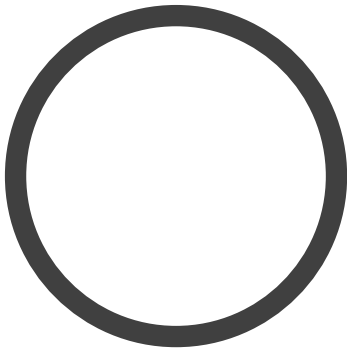
Item No. 7
PN 7-57-265
O-Ring
Inlet Adapter



Item No. 8
PN 7-17-042
Swivel Gasket 1½"



Item No. 4
PN 7-57-268
O-Ring Seat (2)



Item No. 5
PN 7-69-243
Seat (2)

Rivet
PN 7-54-003
USE TO DRIVE OUT
ROLL PINS IN
HANDLE TRUNNIONS



Item No. 9
PN 7-17-043
Swivel Gasket 2½"

